



Dalyell Road, Brixton, SW9

4 bedroom house - terraced for sale

£1,250,000

Freehold

Property Details

Completely renovated over the last two years and with an impressive 1698 square feet of internal living space, each corner of the property has been finished tastefully. The dual-aspect reception room to the front of the house has a bright and airy feel thanks to the characterful bay window and high ceilings. The fully extended kitchen is seriously impressive, with large skylights framing the room and providing an abundance of light. The kitchen itself has been finished to a very high standard and there is plenty of space for a large dining table, making this the ideal spot to entertain and spend time with family. The glass bi-folding doors seamlessly flow into the low-maintenance garden, the perfect sun-trap in which to enjoy the warmer months whilst also bringing the outside indoors. The garden studio is ideal as a home office, gym or indeed an extra bedroom when required. On the first floor, a generous master bedroom spanning the width of the property complete with an en-suite shower room. Towards the rear there is a second versatile bedroom big enough to be a double and complete with an en-suite shower room. The second floor provides two additional double bedrooms, one similar in size to the master below, the other still very well-proportioned. A spacious and luxurious family bathroom completes this floor. The house offers an easily accessible full attic space catering for all storage needs.

Features

- Four double bedrooms
- Three bathrooms & a WC
- Victorian terraced house
- Ideal location close to the heart of Brixton
- South-west facing private garden with studio
- Stunning mix of contemporary design and characterful features
- 1698 square feet of internal living space

Council tax band F EPC rating (null)





Dalyell Road, Brixton, SW9

Dalyell Road

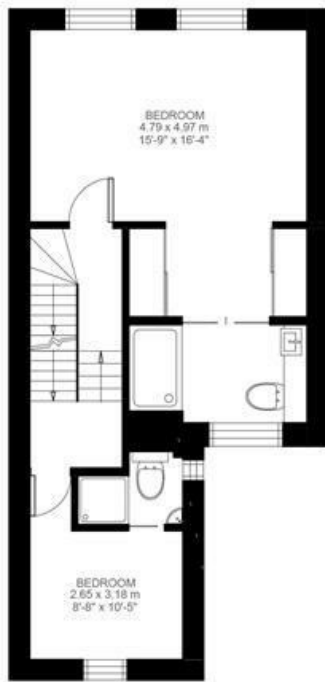


4 Bedroom House

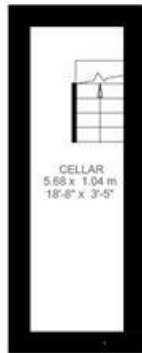
Approx internal area:

1762 sqft 164 sqm

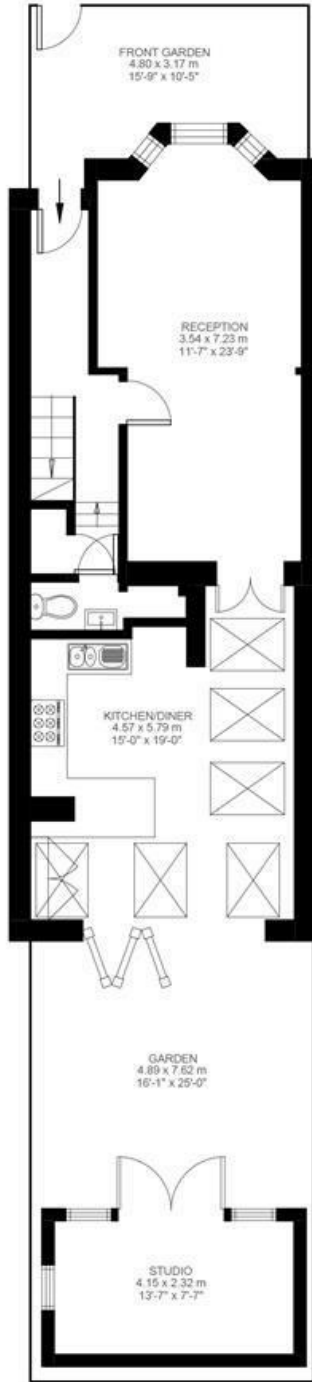
While we do try our very best, floor plans are produced as a guide only and we take no responsibility for the precise accuracy with which any property is represented



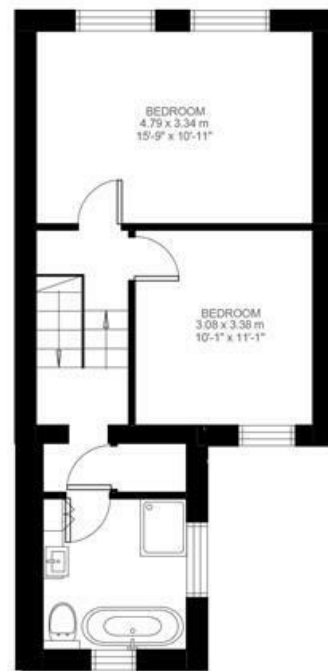
First Floor



Basement



Ground Floor



Second Floor



Dalyell Road, Brixton, SW9

