

Sulina Road, Brixton, SW2

5 bedroom house for sale

£999,950

Freehold

Property Details

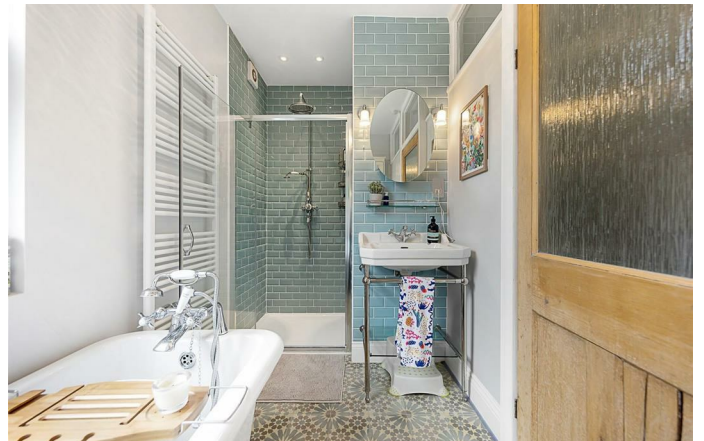
A fully extended five bedroom house in fantastic condition on a quiet residential street, nestled quietly off the amenities on Brixton Hill. The separate reception room occupies the front of the house, a charming feature fireplace and bay window provide a characterful and bright atmosphere. Adjacent, a second reception room, the ideal space for dining or a cosy snug to use as a children's play area as it opens out onto the impressive kitchen, a grand room with large glass bi-folding doors and skylights allowing natural light to flood this fantastic entertaining space. A large island, range cooker and a multitude of storage make this stylish kitchen ideal for any keen cooks and entertainers, it is truly the heart of the home. There is also plenty of space for a large dining table within the kitchen. The bi-folding doors allow the outside in, creating a seamless feel from the pretty, low-maintenance garden. There is a convenient WC located on this floor and plenty of storage options within the hallway. The first floor offers three of the five bedrooms, the master spanning the entire width of the property and offering generous built-in storage, two further genuine double rooms and a family bathroom, complete with walk-in shower and bath tub. The second floor provides two more well-proportioned doubles and a large en-suite bathroom. Chain-free.

Features

- Five double bedrooms
- Two bathrooms and separate WC
- Victorian terraced house
- Over 1617 square feet of internal space
- Private South-facing garden
- Stunning mix of contemporary design and characterful features
- Ideally located between Brixton, Clapham, Balham and Streatham Hill High Streets
- Variety of local amenities
- Freehold
- Chain-free

Council tax band D EPC rating C (69)





Sulina Road, Brixton, SW2



Sulina Road

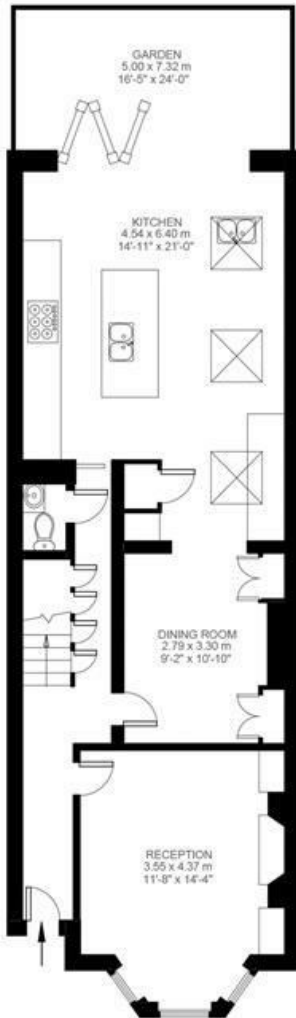
5 Bedroom House

Approx internal area:

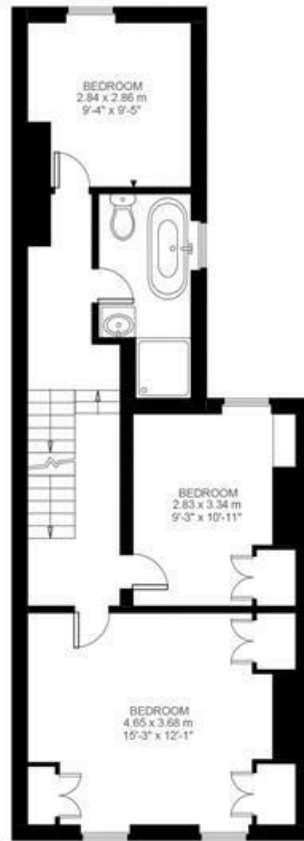
1617 sqft 150 sqm

(EXCLUDING ESTIMATED EAVES STORAGE)
ESTIMATED EAVES STORAGE 4.09 SQ.M / 44 SQ.FT
INCLUSIVE TOTAL AREA 154.34 SQ.M / 1661 SQ.FT

While we do try our very best, floor plans are produced as a guide only and we take no responsibility for the precise accuracy with which any property is represented



Ground Floor



First Floor



Second Floor



Sulina Road, Brixton, SW2

