



**Bonham Road, Brixton, SW2**

**£375,000**

2 bedroom flat for sale

## Property Details

A superb and well-proportioned two double bedroom ground floor flat, boasting a south facing courtyard style garden, located on an attractive residential road close to central Brixton. Bonham road is nestled within a pocket of residential streets tucked away off Brixton Hill, just in-between Brixton and Clapham. Close to the heart of Brixton, a seven-minute stroll from The Ritzy, Windrush Square, Brixton Village and Pop Brixton, this property is perfect for anyone who wants to be close to the action whilst retaining a sense of calm. The property has great proportions, with the majority of the square footage being well appointed as usable living space, as opposed to being distributed within larger hallways. The heart of the home is the bright and spacious reception room, with enough space to include a large dining table. Floor to ceiling windows allow an abundance of light to flood in creating a lovely atmosphere. There is a separate kitchen in good condition, providing plenty of surface space and storage options. Both bedrooms are of good size, with built-in storage and the flat is completed by a modern bathroom and separate WC. A charming flat in a secure development, with private, South-facing outside space.

## Features

- Two double bedrooms
- Over 660 square feet of internal space
- Private, South facing outside space
- Highly sought-after location
- Victoria and Northern lines in easy reach
- Local amenities of Brixton Hill
- Close to Brockwell Park

Council tax band B    EPC rating D (68)



## Bonham Road

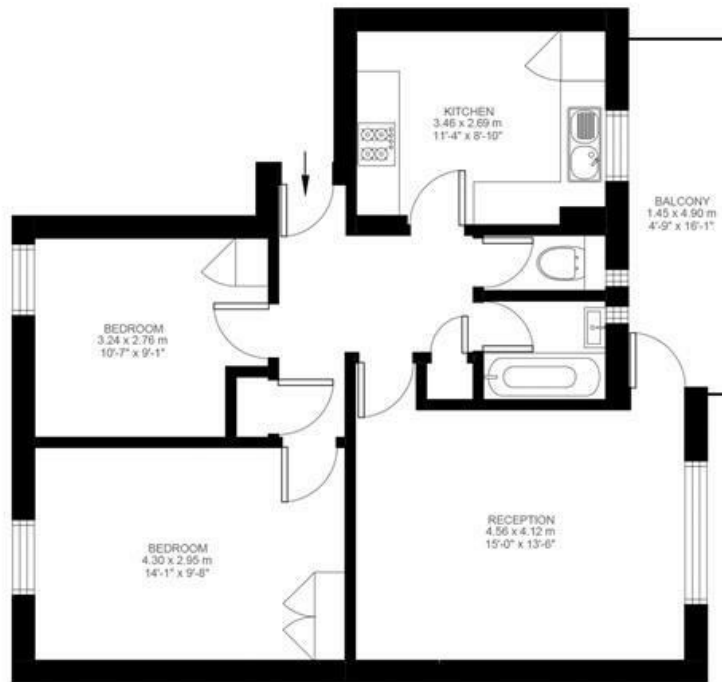
# K

### 2 Bedroom Flat

Approx internal area:

**661 sqft 61 sqm**

While we do try our very best, floor plans are produced as a guide only and we take no responsibility for the precise accuracy with which any property is represented



Ground Floor



Bonham Road, Brixton, SW2

