

**Rosendale Road, Herne Hill, SE24**

2 bedroom flat - conversion for sale

£400,000

Share of Freehold

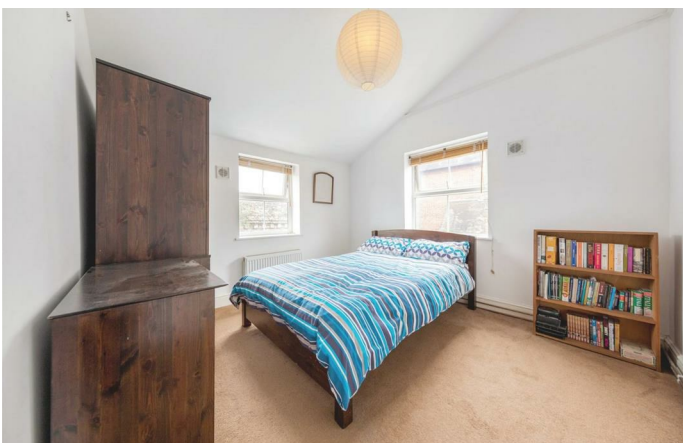
Property Details

A well-appointed two double bedroom flat, occupying the top floor of a Victorian terrace on the ideally located Rosendale Road. Brockwell Park couldn't be much closer and Herne Hill is just around the corner, with the station only a few minutes away by foot. The flat comprises a bright and airy open-plan reception room, providing plenty of space to relax and unwind as well as dine and entertain guests. The room offers fantastic storage options and a sociable kitchen which is partially integrated to maximise on space. Both bedrooms are inviting spaces, tucked away peacefully at the rear of the flat and supported by an impressive bathroom, complete with both a bath and walk in shower in fantastic condition.

Council tax band C EPC rating C (77)

Features

- Two double bedrooms
- Victorian conversion
- Bright and airy
- Moments from Brockwell Park
- Close to transport links
- Local amenities of Herne Hill
- Share of freehold



K

Rosendale Road

2 Bed flat

Approx internal area:

580 sqft 54 sqm

While we do try our very best, floor plans are produced as a guide only and we take no responsibility for the precise accuracy with which any property is represented



Second Floor

First Floor



Rosendale Road, Herne Hill, SE24

