

Lyham Road, Brixton, SW2

2 bedroom flat - conversion for sale

£700,000

Share of Freehold

Property Details

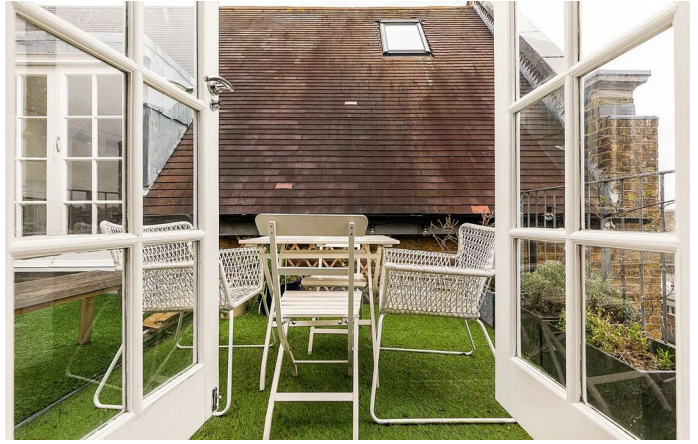
This beautifully presented apartment is split over the third and fourth floor, offering over 1000 square feet of internal living space and packed full of character. Large sash windows flood the eat-in kitchen with natural light, a fantastic entertaining space with plenty of room to cook, dine with a large table and socialise comfortably. Also nestled on this floor, one of the two bedrooms and a sleek, modern en-suite bathroom. On the upper floor, a spacious reception room, equal in size to the open-plan kitchen below. Characterful beams and a mezzanine floor add to the glory of this special apartment, providing a flexible space that could be repurposed to suit the buyer's needs. The reception room provides access to a shared outside area (non-demised and shared with one other apartment), the perfect south-facing spot to soak up some sun during the warmer months. The second bedroom also resides on this floor, offering ample built-in storage and a peaceful location. The property is completed by a tastefully tiled, sleek bathroom.

Features

- Two double bedrooms
- Mezzanine study area
- Two bathrooms
- Characterful school conversion
- Split-level over various levels
- Over 1000 square feet of internal space
- Allocated off-street parking space
- Access to the Victoria and Northern tube lines
- Walking distance to Brixton and Clapham High Streets
- Share of freehold

Council tax band D EPC rating (null)







Lyham Road

2 Bedroom Flat

Approx internal area:

1003 sqft 93 sqm

While we do try our very best, floor plans are produced as a guide only and we take no responsibility for the precise accuracy with which any property is represented



Ground Floor



Lyham Road, Brixton, SW2

