



Norwood Road, Herne Hill, SE27

2 bedroom flat - conversion for sale

£525,000

Share of Freehold

Property Details

A large reception room spans the width of the property and occupies the front of the building. The room is bright and airy thanks to multiple windows typical to the character of the period in which it was built. There is more than enough room to relax and unwind or entertain guests, as well as to dine if desired. The large windows display stunning views over the idyllic Brockwell Park which resides quite literally within a stone's throw. A modern kitchen occupies the adjacent room, plenty of storage options and surface space on offer, with French doors that flood the room with natural light and fresh air. On the upper floor, two well-proportioned bedrooms, one of which spans the entire width of the building and the other tucked peacefully at the rear, overlooking the leafy neighbouring gardens below. A fully equipped modern bathroom serves the bedrooms on this floor and completes this charming period conversion flat.

Council tax band D EPC rating E (51)

Features

- Two double bedrooms
- Split-level
- Victorian conversion
- Over 750 square feet of internal space
- Bright and airy atmosphere throughout
- Opposite Brockwell Park
- Local amenities of Herne Hill in walking distance
- Share of freehold
- Chain-Free





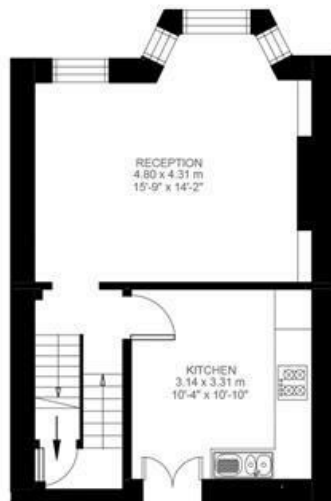
Norwood Road

2 Bedroom Flat

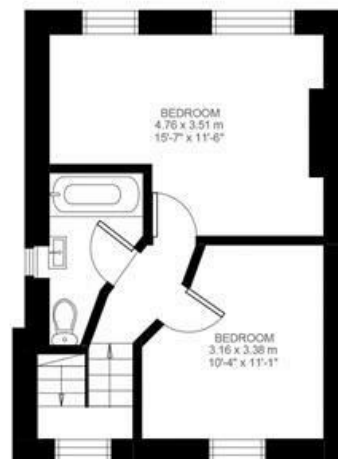
Approx internal area:

756 sqft 70 sqm

While we do try our very best, floor plans are produced as a guide only and we take no responsibility for the precise accuracy with which any property is represented



First Floor



Second Floor



Norwood Road, Herne Hill, SE27

