



Stansfield Road, Brixton, SW9

£399,950

1 bedroom flat - conversion for sale

Share of Freehold

Property Details

This characterful one bedroom flat occupies the middle floor of a handsome, double fronted Victorian terrace on the ideally located Stansfield Road. With quick access to both central Brixton and Clapham High Street, this flat will appeal to a wide range of purchasers thanks to its close proximity to both locations and the appeal of a leafy, residential road. The bedroom is spacious and flooded with natural light thanks to the characterful bay window at the front of the property, the room also offers ample built-in storage. A fully equipped contemporary bathroom resides adjacent to the bedroom, another bright and airy room thanks to the large sash window. The reception room semi open-plan, adorned by two tall sash windows and high ceilings, creating a lovely atmosphere within. There is a characterful log-burner and bespoke built-in shelving and storage. A fully equipped kitchen opens out onto the living area, the flat is in good condition and the overall square footage is well-distributed within each room, rather than being wasted on unused hallways and awkward layouts.

Features

- One double bedroom
- Victorian conversion
- Bright and airy atmosphere
- Well-distributed square footage
- Desirable quiet residential street
- Ideal location minutes from central Brixton
- Access to Victoria, Northern Line and Clapham High Street Station
- Walking distance to Brixton, Stockwell and Clapham High Streets
- Share of Freehold

Council tax band C EPC rating D (67)





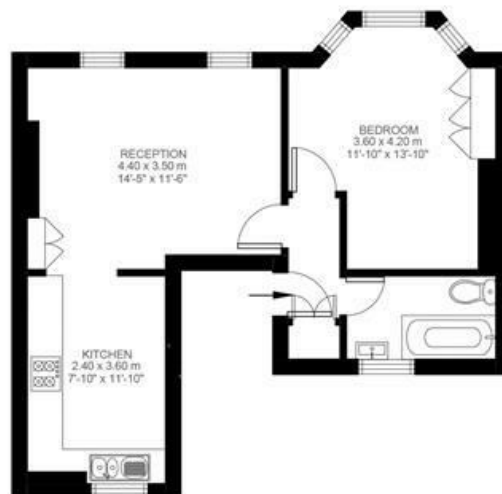
Stansfield Road

1 Bedroom Flat

Approx internal area:

478 sqft 44 sqm

While we do try our very best, floor plans are produced as a guide only and we take no responsibility for the precise accuracy with which any property is represented



First Floor



Stansfield Road, Brixton, SW9

