



Horseshoe Mews, Brixton, SW2

£495,000

2 bedroom flat - purpose built for sale

Property Details

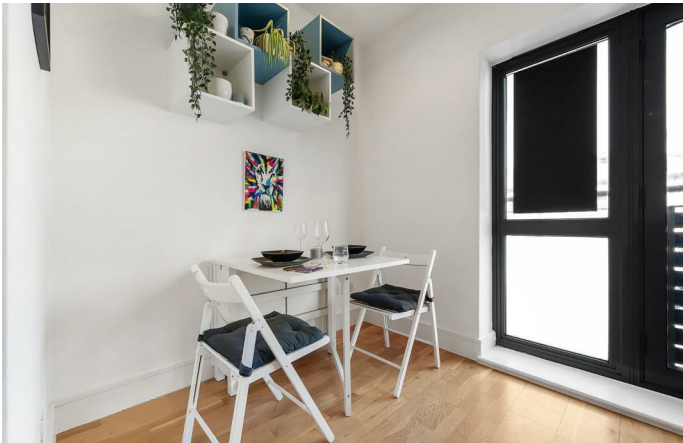
A fantastic two double bedroom, purpose built flat, tucked away securely on the first floor, set within a quiet Mews off Acre Lane. This charming property was built with modern living in mind and offers a large open-plan living space and two well-proportioned bedrooms.

The master bedroom is considerably large, offering built-in storage and stunning glass bi-folding doors that open out to a private balcony, the ideal spot to enjoy a morning coffee and watch the world go by. The second bedroom is also a decent double, offering built-in storage and a large floor to ceiling window, providing the room with an abundance of natural light. The living area is a brilliant spot to relax and unwind or entertain guests. The open-plan layout makes the most of the square footage on offer, rather than wasting extra space on unnecessary hallways. A modern kitchen, with integrated appliances and a sleek white gloss finish occupies one side of the room, whilst the other side is a cosy living area, with enough room to dine. The room is completed by a charming Juliet balcony, allowing fresh air and light to flood the room. The flat is completed by a smart, modern bathroom.

Features

- Two double bedrooms
- Secure purpose-built flat
- Allocated off-road parking
- South-facing private balcony
- Over 640 square feet of internal living space
- Bright and airy atmosphere throughout
- Ideal location minutes from all the action
- Victoria and Northern lines in easy reach
- Brockwell Park in walking distance

Council tax band D EPC rating B (82)





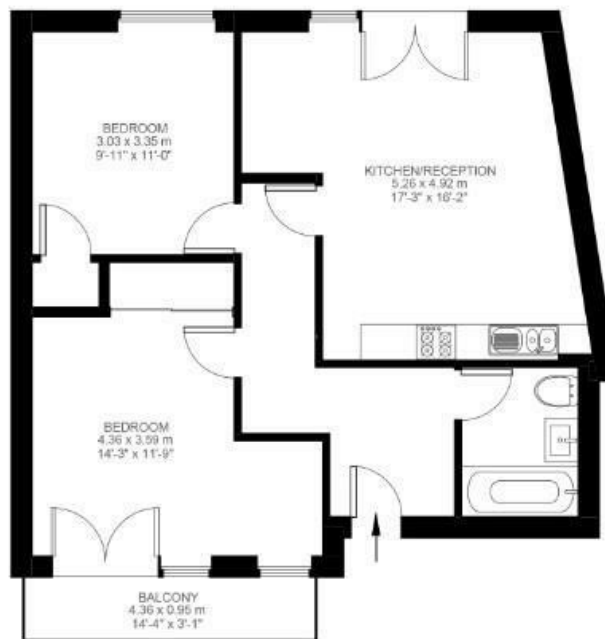
Acre Lane

2 Bedroom Flat

Approx internal area:

664 sqft 62 sqm

While we do try our very best, floor plans are produced as a guide only and we take no responsibility for the precise accuracy with which any property is represented



First Floor



Horseshoe Mews, Brixton, SW2

