



Netherford Road, Clapham, SW4

4 bedroom house for sale

£1,275,000

Freehold

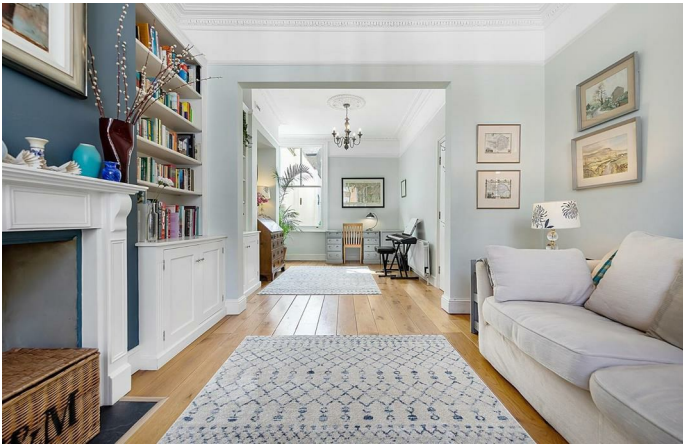
Property Details

A beautifully presented four double bedroom Victorian terraced house on a tree-lined residential street, ideally located a short stroll from Clapham Old Town and perfectly positioned between the green open spaces of Clapham Common and Battersea Park. A mix of contemporary finishes and characterful features are a running theme through this attractive period property. Occupying the front of the house, a brilliantly lit dual-aspect reception room, adorned with ceiling corning, a feature fireplace, bespoke shelving and a bay window. The bright and airy atmosphere, coupled with the original period features create a beautiful environment in which to relax and unwind or entertain guests. Towards the rear, a beautifully designed eat-in kitchen, complete with a range cooker, ample space to dine and floor to ceiling concertina doors that open out onto the mature and manicured private 60 foot West-facing garden. The contemporary kitchen is ideal for any keen cooks with an abundance of storage and surface space. On the upper floors of the house, four well-proportioned double bedrooms. The master spans the width of the house and occupies the front, flooded with brightness from the large bay window and ample built-in storage. A further two rooms plus a spacious and inviting family bathroom also reside on this floor. On the second floor, the final bedroom is nestled peacefully alongside a sleek and modern second bathroom. The house also benefits from a convenient basement utility room, ideal for additional white goods and plenty of additional storage space.

Council tax band F EPC rating (null)

Features

- Four double bedrooms
- Two contemporary bathrooms
- Freehold period house
- Mature private South-West facing garden
- Over 1640 square feet of internal living space
- Potential to extend, STPP
- Brilliant location close to Clapham Old Town
- London Overground, Northern Line and Victoria Line
- Clapham Common and Battersea Park within walking distance







Netherfold Road

4 Bedroom House

Approx internal area:

1641 sqft 152 sqm

(EXCLUDING LOFT)
 LOFT 40.10 SQ.M / 432 SQ.FT
 INCLUSIVE TOTAL AREA 192.10 SQ.M / 2068 SQ.FT

While we do try our very best, floor plans are produced as a guide only and we take no responsibility for the precise accuracy with which any property is represented



Netherford Road, Clapham, SW4

