**Tulse Hill, Brixton, SW2****£485,000**

2 bedroom flat - purpose built for sale

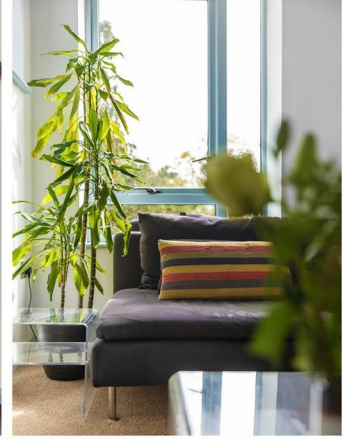
## Property Details

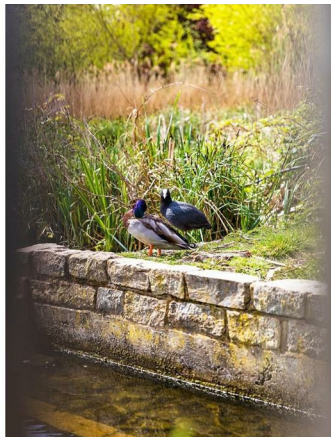
Two well-proportioned double bedrooms are peacefully tucked away from the road, providing a calm and private place to relax and unwind. The larger master also comes with a modern en-suite bathroom. The decent square footage of this property is utilised well in the open-plan living area, as opposed to wasting it on unnecessarily larger hallway space. The impressive reception room is flooded with light and is complete with a modern, fully integrated sleek white kitchen, a stylish breakfast bar plus enough space to dine. The ideal space to entertain friends or relax, with direct access onto the private balcony. The flat is completed by a sleek and modern family bathroom.

**Council tax band D**    **EPC rating B (86)**

## Features

- Two double bedrooms
- Two bathrooms
- Private balcony
- Over 670 square feet of internal space
- Brockwell Park on the doostep
- Local amenities of Tulse Hill
- Bright and airy property
- Brixton & Herne Hill town centres in under fifteen minutes





## Tulse Hill

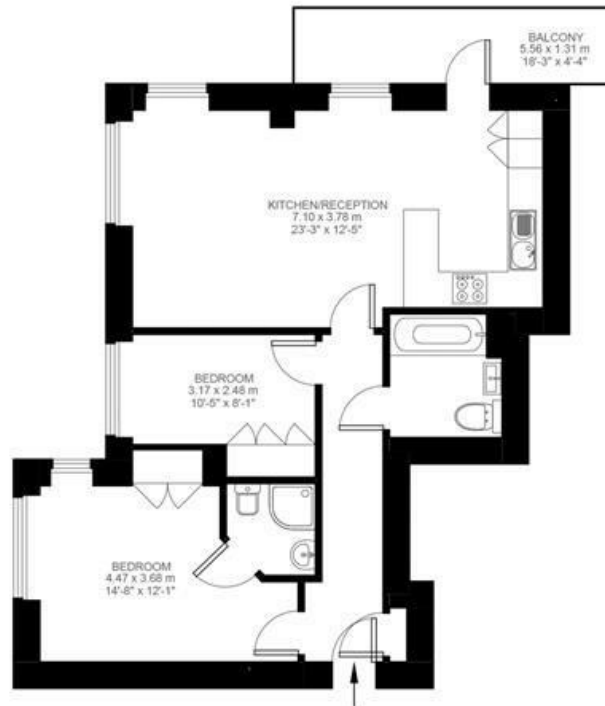


### 2 Bedroom Flat

Approx internal area:

**673 sqft 63 sqm**

While we do try our very best, floor plans are produced as a guide only and we take no responsibility for the precise accuracy with which any property is represented



Third Floor



Tulse Hill, Brixton, SW2

