**Josephine Avenue, Brixton, SW2****£535,000**

2 bedroom flat - conversion for sale

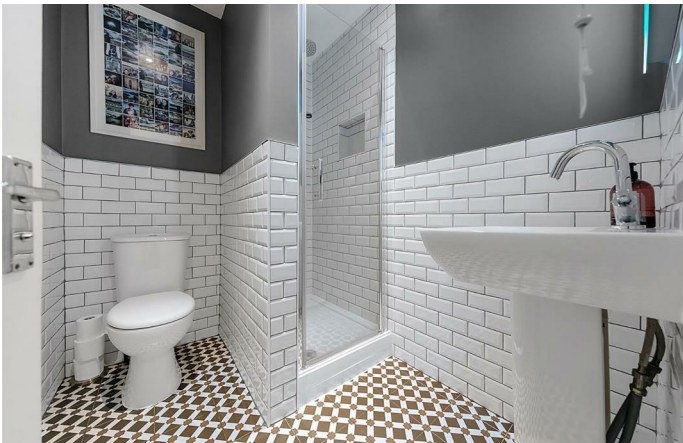
## Property Details

Beautifully presented, this spacious apartment occupies the ground floor of a well maintained Victorian terraced house. Boasting a large open plan kitchen reception room that runs across the rear of the property and opens out onto the private garden. The stylish kitchen benefits from a multitude of storage options, surface space and a fantastic breakfast bar. The space feeds into an inviting reception area, ideal for winding down or entertaining guests. This is a truly enviable space to relax or entertain in. The mix of period features and contemporary design, alongside the terrific condition of this tastefully decorated property, make this flat a truly special space. Both bedrooms are large and share a sleek, modern bathroom, there is truly a high standard throughout. The master bedroom at the front of the property boasts a large bay window and a feature fireplace. The second bedroom is tucked peacefully towards the rear and benefits from French doors with garden access. The low maintenance garden is a truly charming and private outside space, ideal for enjoying the warmer months.

Council tax band C    EPC rating (null)

## Features

- Two double bedrooms
- Low-maintenance private garden
- Victorian conversion
- Bright and airy throughout
- Sought-after location
- Over 700 square feet of internal space



# K

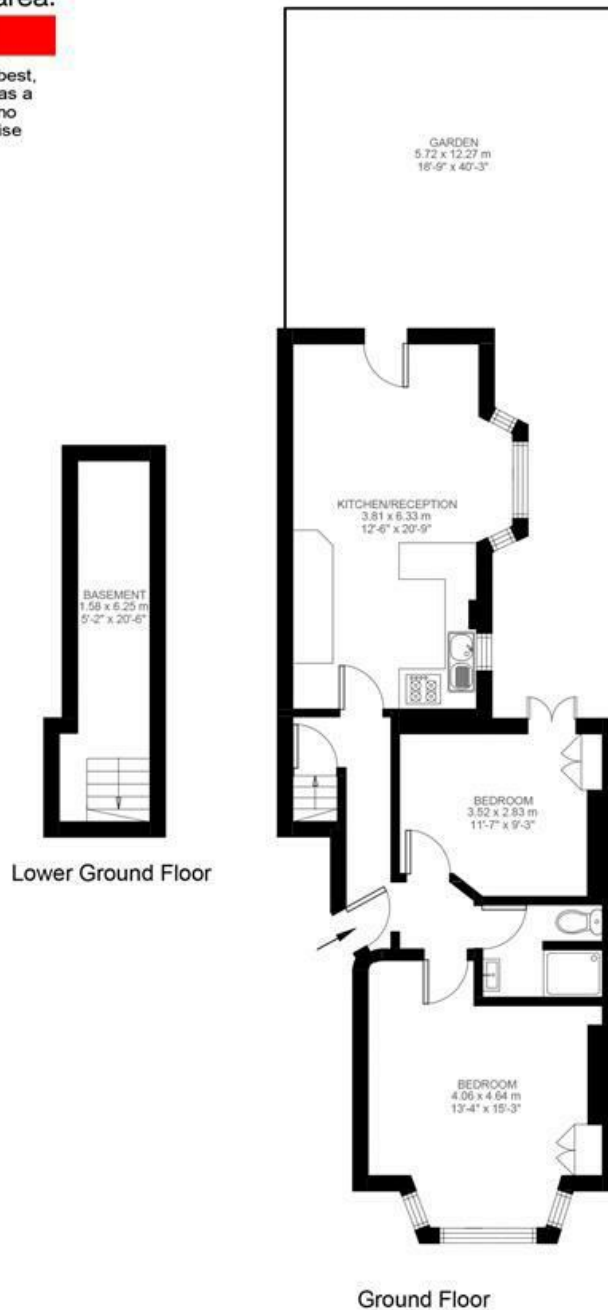
## Josephine Avenue

### 2 Bedroom Flat

Approx internal area:

**728 sqft 68 sqm**

While we do try our very best, floor plans are produced as a guide only and we take no responsibility for the precise accuracy with which any property is represented



Josephine Avenue, Brixton, SW2

