

**Beechdale Road, SW2**

1 bedroom flat - conversion for sale

**£399,999**

## Property Details

This bright and elegant one double bedroom flat occupies the top floor of one of the handsome Victorian terraces on Beechdale Road, a highly sought-after residential road, perfectly located for the amenities and transport links in central Brixton (10 minute walk approx). The spacious double bedroom is tucked away quietly to the rear of the property, with views across the leafy neighbouring gardens. Just adjacent is the recently fitted, contemporary bathroom, complete with stylish tiling. The icing on the cake is the fantastic open plan kitchen/reception. Large skylights make this a wonderfully bright living space. The sleek kitchen has been finished to a high standard and provides all you need in terms of worktop and storage space, whilst the reception area provides the perfect spot in which to relax and unwind, perfect for cosy nights in. The flat is ready for a purchaser to move in hassle free, tastefully finished and creating a beautifully airy apartment that feels like a home as soon as you walk through the door.

## Features

- One double bedroom
- Victorian conversion
- Secure top floor flat
- Bright and airy atmosphere throughout
- Over 600 square feet of internal living space
- Popular quiet residential road

Council tax band

EPC rating E (54)





Beechdale Road, SW2



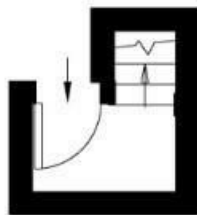
## 1 Bed flat

Approx internal area:

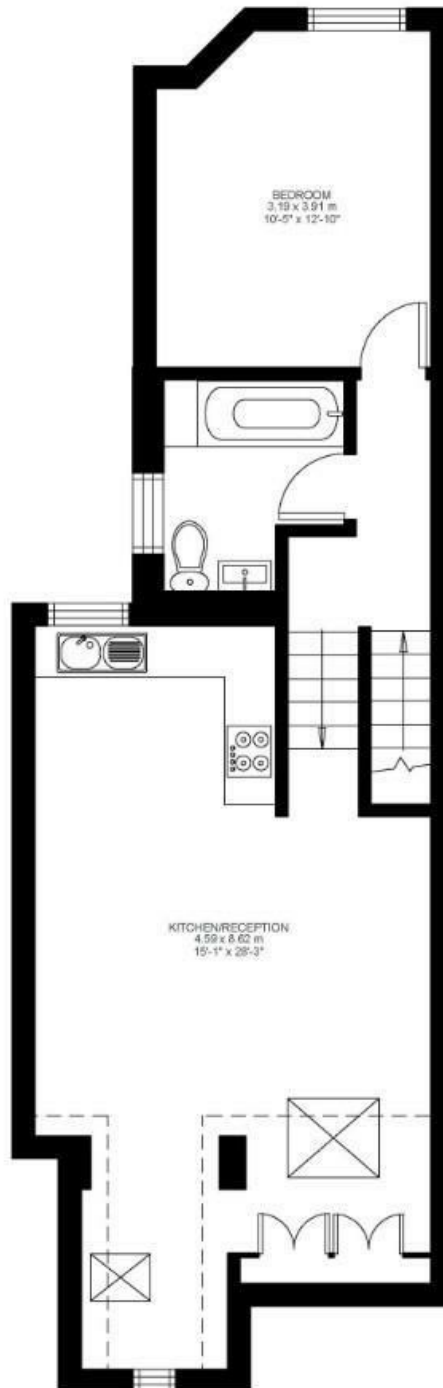
**636 sqft 59 sqm**

While we do try our very best, floor plans are produced as a guide only and we take no responsibility for the precise accuracy with which any property is represented

Beechdale Road



First Floor



Second Floor



Beechdale Road, SW2

