

**Beechdale Road, Brixton, SW2**

5 bedroom house for sale

£1,100,000

Freehold

Property Details

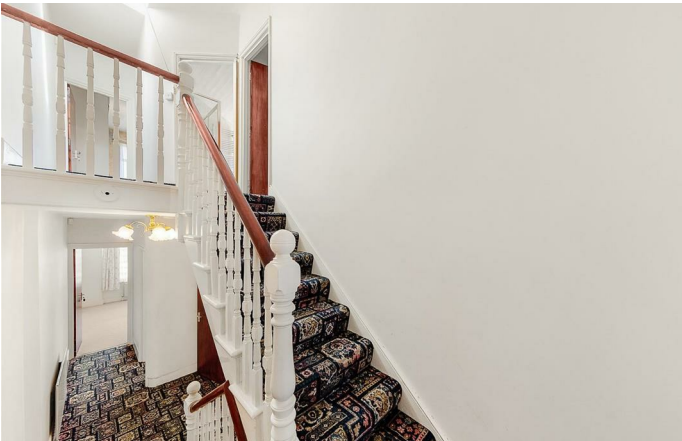
An elegant and characterful five double bedroom, three bathroom Victorian terraced house, arranged over three spacious floors and boasting an impressive total of 2051 square feet. This attractive property is located on a highly sought-after residential road, Beechdale Road. Perfectly located just off of the trendy Brixton Hill, a ten-minute walk to the centre of Brixton. This popular street benefits from a quiet setting as the road wraps around onto Fairmount Road, only allowing access to these particular houses on these two popular roads. The property is only a short walk away from two of Brixton's most popular primary schools, the local amenities on vibrant Brixton Hill, the vast open spaces of Brockwell Park and the fantastic variety of cuisine on offer in central Brixton. With access to the Victoria line at Brixton tube station also within a ten-minute stroll, the location cannot be overstated.

Council tax band F EPC rating (null)

Features

- Five double bedrooms
- Three bathrooms
- Victorian terraced house
- Over 2000 square feet of internal space
- Bright, airy and characterful property
- Large private garden
- Stamp your own mark
- Highly desirable road
- Chain-free





Beechdale Road, Brixton, SW2

K

5 Bedroom House

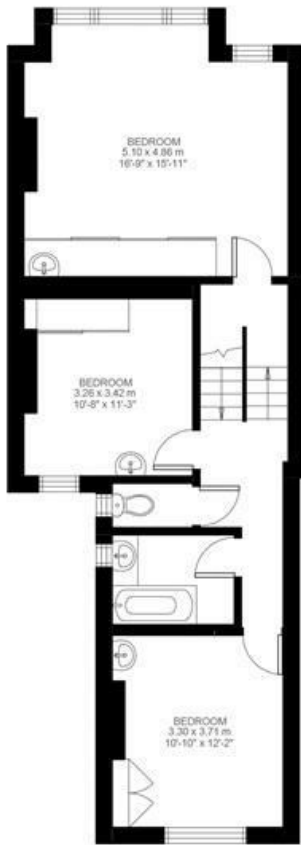
Approx internal area:

2051 sqft 191 sqm

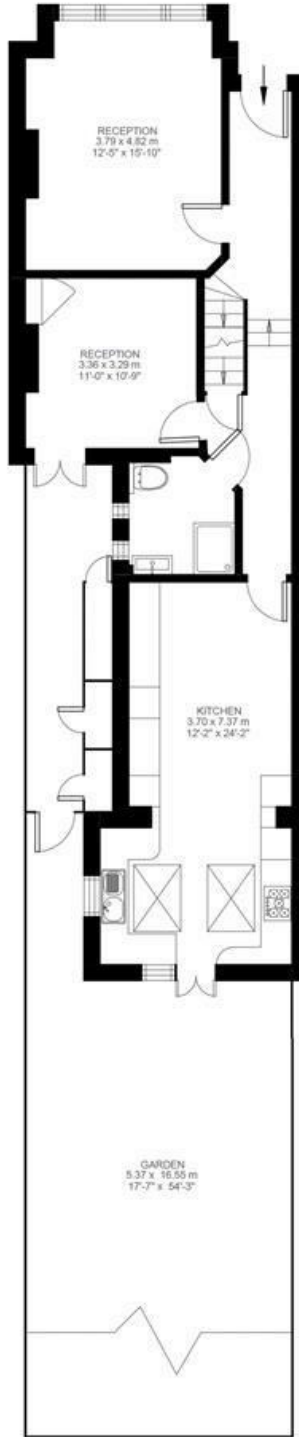
(EXCLUDING EAVES STORAGE)
EAVES STORAGE 21.04 SQ.M / 226 SQ.FT
INCLUSIVE TOTAL AREA 211.04 SQ.M / 2272 SQ.FT

While we do try our very best, floor plans are produced as a guide only and we take no responsibility for the precise accuracy with which any property is represented

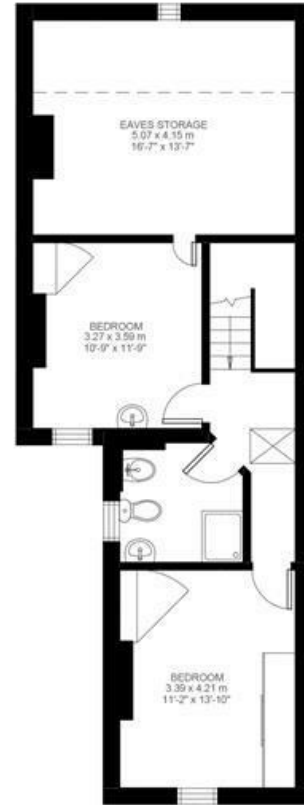
Beechdale Road



First Floor



Ground Floor



Second Floor



Basement



Beechdale Road, Brixton, SW2

