



Trinity Rise, Herne Hill, SW2

2 bedroom flat - conversion for sale

£599,950

Share of Freehold

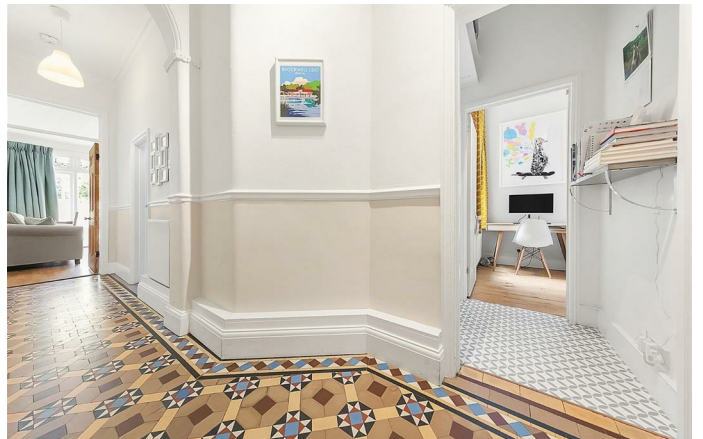
Property Details

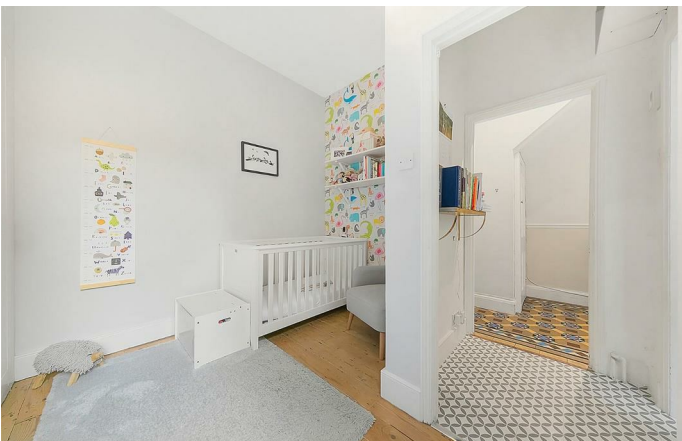
Typical period characteristics such as the well-maintained original tiling, high ceilings and picture rails in the hallway bring the charm of this home to life from the moment you walk through the door. At the front of the property, the principal bedroom is spacious and beautifully lit. Virtually spanning the width of this bedroom, the striking bay window floods the room with natural light adding to the airy atmosphere. Exposed wood flooring and a feature fireplace complete the room. Adjacent, the further bedroom is an ideal second space that is still a comfortable double, perfect as a guest room, to share with friends or for anyone looking for a buy-to-let. This room is flexible and can be repurposed to suit the needs of the purchaser. A comfortable reception room at the rear of the property provides the ideal space to relax, unwind or entertain, with direct access to a pretty, low-maintenance private garden. The floor-to-ceiling glass double doors allow air and light to filter into the room whilst creating a seamless feel to the patio area directly outside. Completing this handsome property, a fully equipped family bathroom and a modern galley kitchen. The kitchen offers integrated appliances and an abundance of storage options, finished with sleek white cupboards and trendy tiling.

Features

- Two double bedrooms
- Edwardian conversion
- Characterful features
- Over 730 square feet of internal living space
- Private garden
- Moments from Brockwell Park
- A short stroll to Herne Hill and Tulse Hill stations
- Share of freehold
- Chain-free

Council tax band C EPC rating D (57)







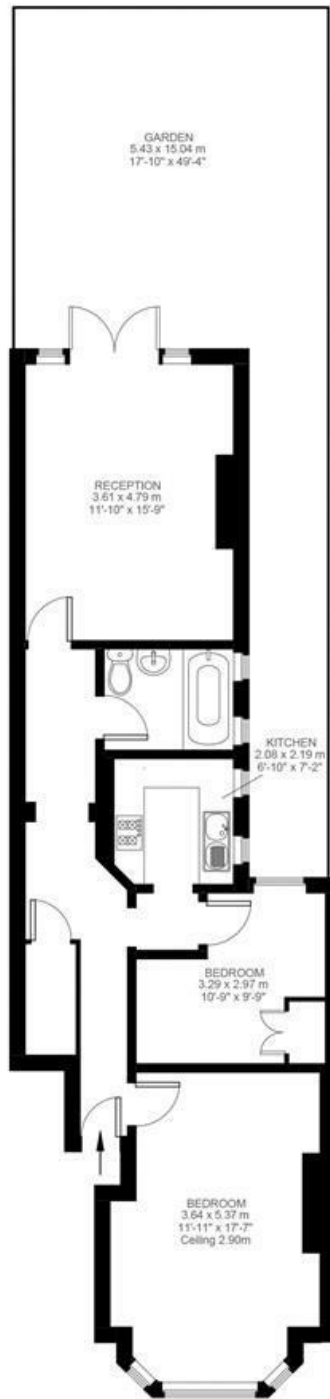
2 Bedroom Flat

Approx internal area:

738 sqft 69 sqm

While we do try our very best, floor plans are produced as a guide only and we take no responsibility for the precise accuracy with which any property is represented

Trinity Rise



Ground Floor



Trinity Rise, Herne Hill, SW2

