



Lambert Road, Brixton, SW2

£650,000

2 bedroom flat - conversion for sale

Property Details

A charming example of a two double bedroom, two bathroom garden flat, nestled within the ground floor of a converted, double fronted Victorian townhouse., ideally located Brixton and Clapham. The heart of the home is the impressive semi open-plan living area, with generous space to dine and entertain as well as relax and unwind, complete with a fully-equipped kitchen and glass double doors that open out onto the low-maintenance, larger than average private garden. The garden is a fantastic size and South-facing, making it the ideal sun-trap to enjoy warmer months and host garden parties without having to spend too much time on upkeep. The first of the bedrooms resides at the front of the property and benefits from plenty of space, a brilliant en-suite bathroom and a large bay window that floods the room with light and creates a bright and airy atmosphere. The second bedroom is a genuine double and resides peacefully towards the rear, overlooking the garden. A family bathroom is found adjacent, in great condition and providing a desirable level of privacy between the two bedrooms, making this property ideal for anyone looking to rent out the spare room or share with friends. The characterful curved wall in the hallway really contributes to the spacious atmosphere throughout and with 850 square feet of internal living space, the property will appeal to a wide range of potential purchasers.

Council tax band D EPC rating (null)

Features

- Two double bedrooms
- Two bathrooms
- Private, South-facing garden
- Over 840 square feet of internal space
- Victorian conversion
- Popular residential road
- Local amenities within minutes
- Clapham and Brixton within easy reach
- Chain-free





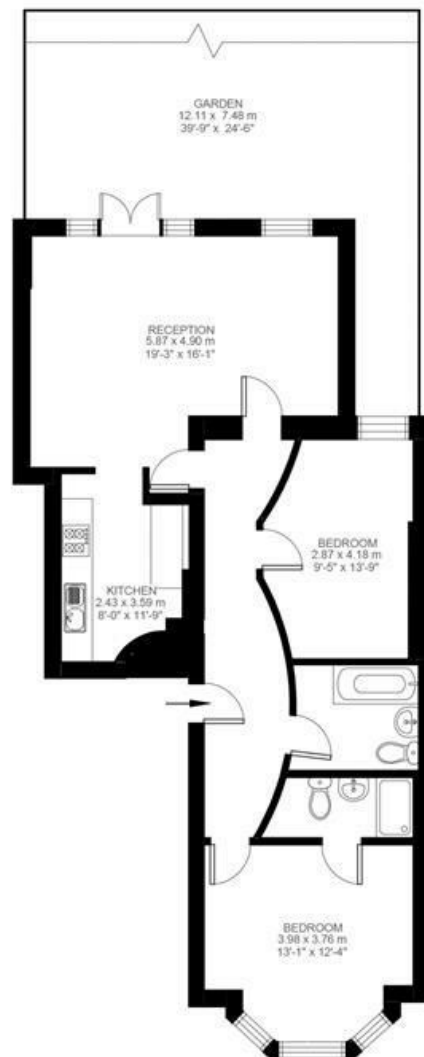
Lambert Road

2 Bedroom Flat

Approx internal area:

847 sqft 79 sqm

While we do try our very best, floor plans are produced as a guide only and we take no responsibility for the precise accuracy with which any property is represented



Ground Floor



Lambert Road, Brixton, SW2

