



**Tulse Hill, Brixton, SW2**

**£350,000**

2 bedroom flat - purpose built for sale

## Property Details

Ideally situated overlooking leafy Brockwell Park, this two double bedroom third floor flat will appeal to a wide range of purchasers. Having such a vast and popular outside space on the doorstep is one of many selling points of this lovely property, Brixton tube station is only eleven minutes by foot, as is the idyllic Herne Hill and all the charming amenities it has on offer nestled just on the other side of the park. The square footage available has been maximised to make use of all available space, without wasting an inch on larger, unused hallway space. Both bedrooms are very well proportioned spaces, making this property ideal as a buy-to-let or for anyone looking to share with friends. The large and airy reception room neighbours an attractive, modern, integrated kitchen that provides plenty of storage options and surface space. An attractive contemporary family bathroom and conveniently separate WC complete this charming flat.

## Features

- Two double bedrooms
- Purpose built flat
- Recently refurbished
- Bright and airy throughout
- Securely located on the top floor
- Fantastic Views
- Walking distance to Brixton and Herne Hill
- Brockwell Park in moments
- Chain-free

Council tax band      EPC rating E (54)





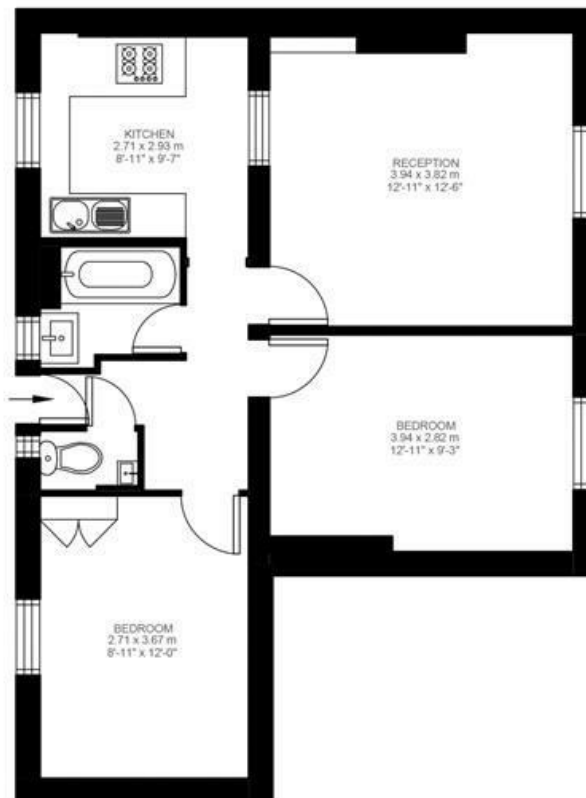
## Tulse Hill

### 2 Bedroom Flat

Approx internal area:

**595 sqft 55 sqm**

While we do try our very best, floor plans are produced as a guide only and we take no responsibility for the precise accuracy with which any property is represented



Third Floor



Tulse Hill, Brixton, SW2

