

Coldharbour Lane, Brixton, SW9

£575,000

2 bedroom flat - purpose built for sale

Property Details

The apartment comprises a bright and contemporary semi-open plan kitchen plus a fantastic reception room, offering an abundance of character, high ceilings and light plus plenty of space to relax and unwind as well as dine. A beautifully designed bathroom complete with walk-in shower and freestanding bath tub complimented with gold finishes and trendy tiling. Both bedrooms are comfortable, the principal bedroom is flooded with natural light and particularly spacious, whilst the second room is a fantastic space that can easily be repurposed to suit the needs of the purchaser. The icing on the cake is the huge communal roof terrace, loved and cared for by the residents of Connaught Mansions. This exceptional space is a real sun trap, perfect for enjoying summer BBQs, relaxing with a book or watching the sunset with friends, offering great views across Brixton.

Features

- Two double bedrooms
- Over 700 square feet of internal space
- Victorian mansion block
- Large communal roof terrace
- Local amenities on the doorstep
- Victoria line in moments
- Brockwell Park in walking distance

Council tax band C EPC rating (null)



Coldharbour Lane, Brixton, SW9



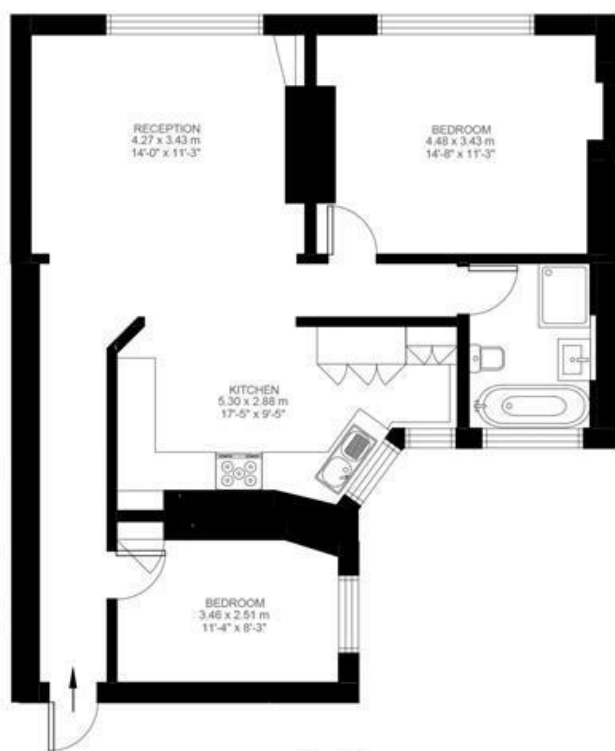
Coldharbour Lane

2 Bedroom Flat

Approx internal area:

773 sqft 72 sqm

While we do try our very best, floor plans are produced as a guide only and we take no responsibility for the precise accuracy with which any property is represented



First Floor



Coldharbour Lane, Brixton, SW9

