

Park Hill, Clapham, SW4

2 bedroom flat - conversion for sale

£550,000

Share of Freehold

Property Details

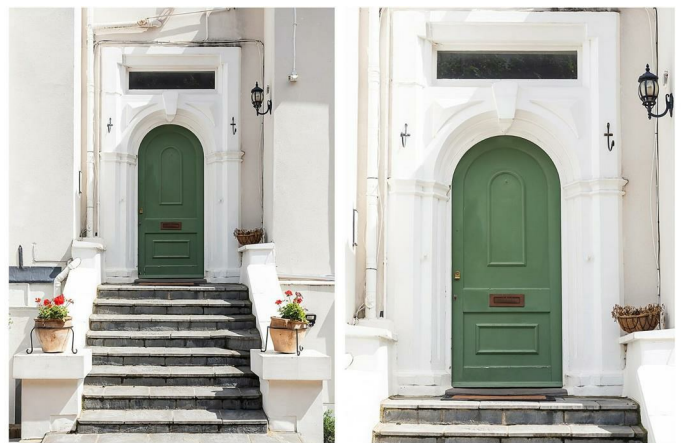
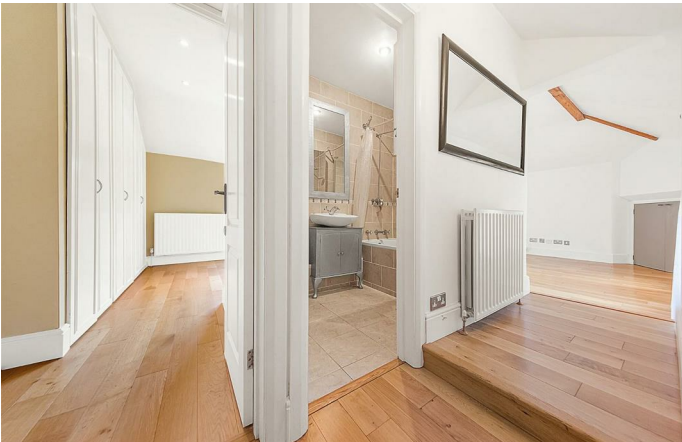
A perfectly located and characterful two double bedroom flat, securely nestled on the first floor of an imposing period townhouse, set back from the road peacefully with close proximity to Clapham High Street, the delights of Abbeville Village and with easy access to central Brixton. Large windows and high ceilings are a common theme throughout this flat, as is generous storage options and plenty of character. Both bedrooms are cosy yet spacious and come with considerable storage options, finished with appealing views of the neighbouring area. The bedrooms are both located adjacent to a modern and sleek family bathroom, conveniently located for direct access from all areas of the flat and creating a level of privacy between the two bedrooms. The heart of the home is the impressive open-plan reception room, offering a traditionally styled kitchen and an abundance of dining, entertaining and relaxing space. The kitchen itself is fully equipped and ready to function, with plenty of surface space and storage options, one can be truly comfortable to enjoy creating food without the compromise of separation from the entertaining space. Not only does this layout benefit from this social aspect, it also maximises the square footage on offer by creating a vaster room for use.

Features

- Two double bedrooms
- Converted period property
- Bright and airy property
- Period character
- Share of freehold
- Local amenities of Clapham High St and Abbeville Village
- Victoria and Northern lines within walking distance
- Close to Abbeville Village and Clapham Common
- Off-street parking
- Chain free

Council tax band

EPC rating C (70)





2 Bedroom Flat

Approx internal area:

644 sqft 60 sqm

While we do try our very best, floor plans are produced as a guide only and we take no responsibility for the precise accuracy with which any property is represented

Park Hill



First Floor



Park Hill, Clapham, SW4

