

Kellett Road, Brixton, SW2

£635,000

3 bedroom flat - conversion for sale

Property Details

Spanning the width of the building and flooded with natural light, a lovely open-plan kitchen-reception. This appealing space with high-ceilings manages to provide a full size kitchen complete with integrated appliances and generous storage, as well as a cosy reception and dining area on the other side. Ideal for entertaining, or relaxing and unwinding, it is a room that is sure to be the heart of the home. On the upper floor, three very well proportioned bedrooms. Two of which peacefully overlook the gardens at the rear, whilst the principal bedroom sits at the front and mirrors the generous dimensions of the open-plan living space below. The current occupiers use this handsome space as their reception room, beautifully demonstrating how easy it is to repurpose spare rooms to suit the needs of the purchaser. The bedrooms share a modern en-suite bathroom, also located on this floor, finished with slate flooring and a sleek white tiling.

Council tax band D

EPC rating (null)

Features

- Three double bedrooms
- Almost 900 square feet of internal space
- Victorian conversion
- Split-level
- Loft
- Bright and airy atmosphere throughout
- Double-glazed, wooden sash windows
- Moments from Brixton tube station and Brixton Village
- Ten-minute walk to Herne Hill
- A short stroll to Brockwell Park



K

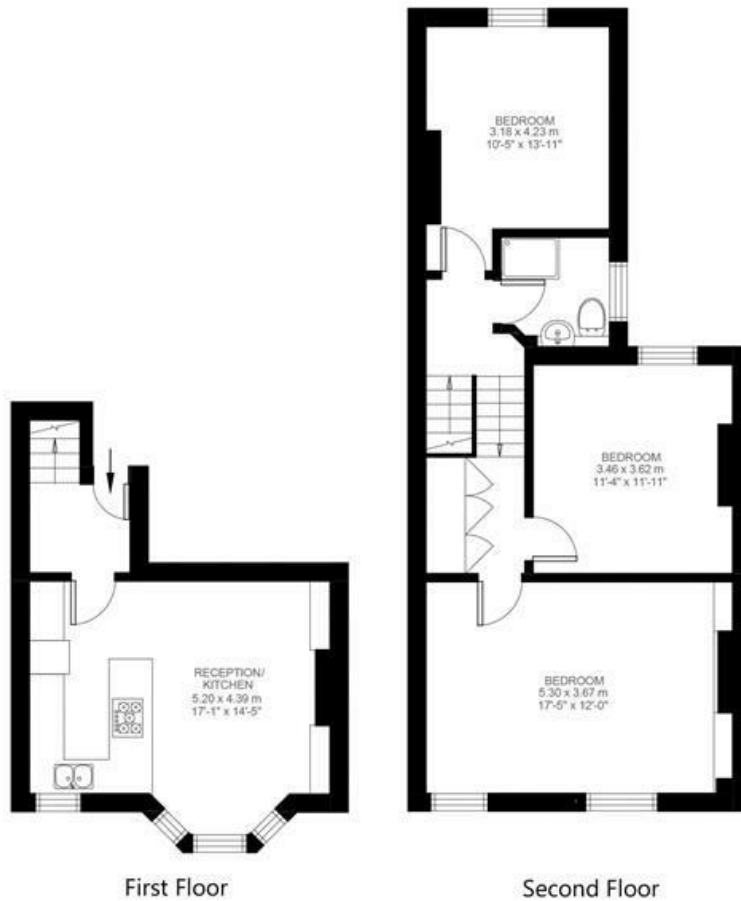
Kellett Road

3 Bedroom Flat

Approx internal area:

898 sqft 83 sqm

While we do try our very best, floor plans are produced as a guide only and we take no responsibility for the precise accuracy with which any property is represented



Kellett Road, Brixton, SW2

