



## Helix Gardens, Brixton, SW2

1 bedroom flat - conversion for sale

**£549,950**

Share of Freehold

### Property Details

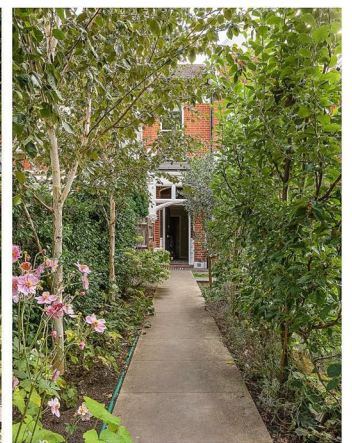
A beautifully presented and rare to market one bedroom garden flat, nestled peacefully amongst the charming properties of Helix Gardens. Offering over 700 square feet, a private South-facing garden and endearing character throughout. This extremely sought-after residential road is a ten-minute stroll from Brixton High Street and only a few minutes from Brockwell Park. The property comprises a handsome reception room at the front of the building. Spacious and bursting with character, in keeping with the rest of the flat. High, embellished ceilings, a stunning feature fireplace and a large square bay window all contribute to the grand feeling of the property, which is fairly hard to come by for a one-bed. The bedroom follows on, peacefully located overlooking the garden at the rear. The bathroom is stylishly tiled with a tasteful finish. A large eat-in kitchen completes the flat, large enough to serve a family home and ideal for entertaining as it opens straight out onto the sunny and tranquil garden at the rear. A low-maintenance space with plenty of charm, the perfect spot to enjoy the warmer months within the privacy of your own home. The property also benefits from private off-street parking.

Council tax band      EPC rating (null)

### Features

- One bedroom
- Victorian conversion
- South-facing, private garden
- Over 700 square feet
- Bright and characterful throughout
- Highly desirable quiet residential road
- 10 minutes from central Brixton
- Brockwell Park in minutes
- Off-street parking







Helix Gardens, Brixton, SW2

**K**

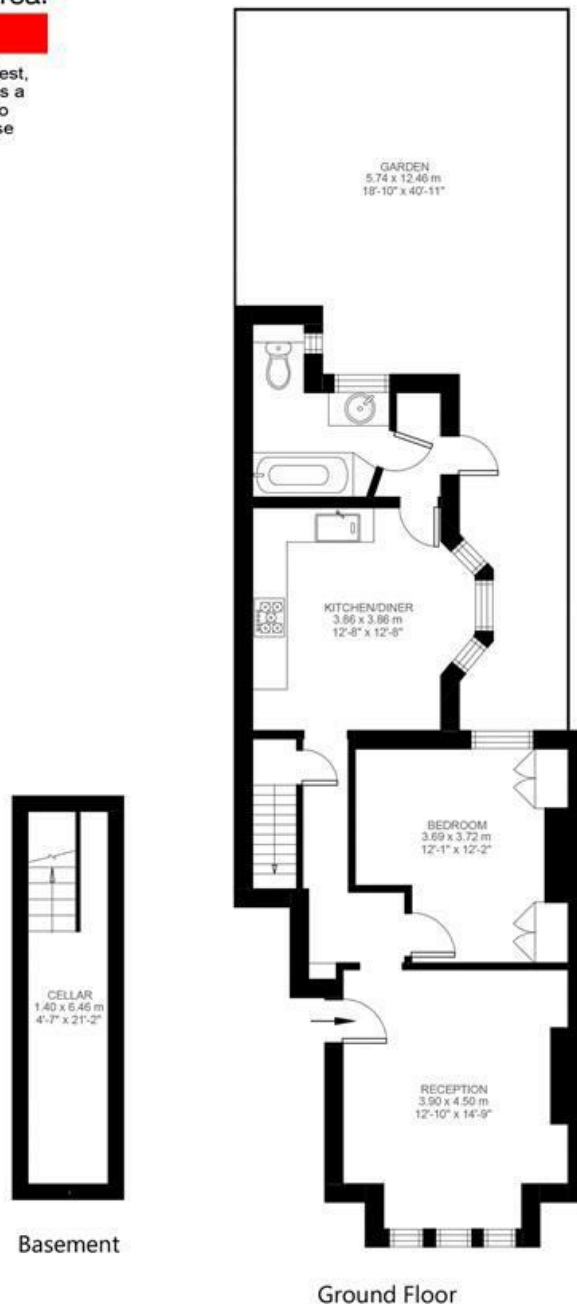
## 1 Bedroom Flat

Approx internal area:

**733 sqft 68 sqm**

While we do try our very best, floor plans are produced as a guide only and we take no responsibility for the precise accuracy with which any property is represented

## Helix Gardens



Helix Gardens, Brixton, SW2

