

**Lambert Road, Brixton, SW2**

2 bedroom flat - conversion for sale

£585,000

Share of Freehold

Property Details

The heart of the home is the attractive open-plan reception room. A comfortable space with plenty of room to relax and unwind, dine, cook and entertain. The kitchen is sleek and modern with integrated appliances that maximise on the square footage on offer and there is comfortable dimensions for a large dining table. The room is flooded with light thanks to the characterful bay window. Both bedrooms are comfortable doubles, the larger of the two with an en-suite shower and a further family bathroom accessed from the hallway. A study room completes the property, the perfect room to do with what you desire, from a home office to a nursery, a dressing room or perhaps a spare bedroom if required. The flat is in great condition throughout, comes with access to an appealing shared garden and a share of the freehold.

Council tax band

EPC rating E (48)

Features

- Two double bedrooms
- Study
- Two bathrooms
- Shared garden
- Victorian conversion
- Popular residential road
- Local amenities within minutes
- Clapham and Brixton within easy reach
- Share of freehold



Lambert Road, Brixton, SW2



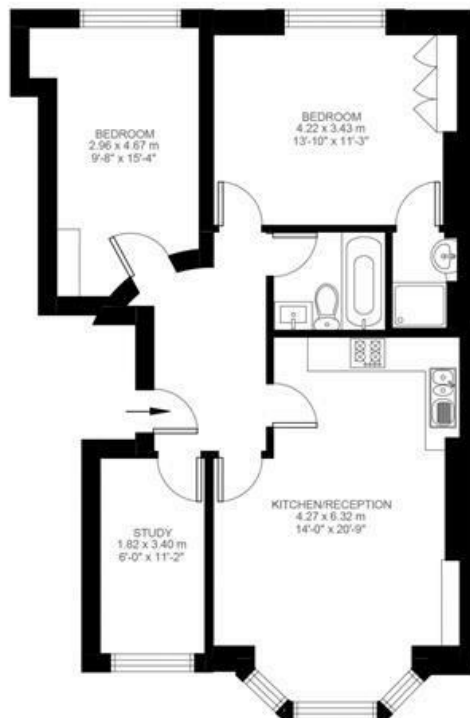
Lambert Road

2 Bedroom Flat

Approx internal area:

760 sqft 71 sqm

While we do try our very best, floor plans are produced as a guide only and we take no responsibility for the precise accuracy with which any property is represented



First Floor



Lambert Road, Brixton, SW2

