



Branksome Road, Brixton, SW2

£599,950

2 bedroom flat - conversion for sale

Property Details

A beautifully presented two double bedroom garden flat on a popular residential street, offering generous proportions throughout. Ideally located for anyone looking to purchase in both the Clapham and Brixton areas as this property is within walking distance to both. The spacious master bedroom occupies the front of the property, with built in storage and a large bay window that filters an abundance of light into the tranquil room. Conveniently located just next door is a modern family sized bathroom which provides privacy between this bedroom and the second double room that resides on the other side. The sociably sized open plan reception room is tucked away towards the rear of the property, with another brightening bay window and plenty of space to relax and dine. The kitchen is new, modern and has all that you need in terms of mod cons and surface space and opens out onto a pretty south facing garden. This property is in great condition throughout, with its charming open plan living space and leafy residential location making it a fantastic all-rounder. Brixton is situated within a nine-minute walk, with super-fast links to Central London, the ever-popular Brixton Village and the green open spaces of Brockwell Park. Within a ten minute walk in the other direction is all that Clapham has to offer, with transport links including Clapham High Street station, Clapham Common and Clapham North tube stations.

Features

- Two double bedrooms
- Ground floor of a converted Victorian terraced house
- South facing garden
- Over 750 square feet of internal living space
- Short walk to local amenities
- Close to Brockwell Park

Council tax band D EPC rating E (54)



Branksome Road, Brixton, SW2

K

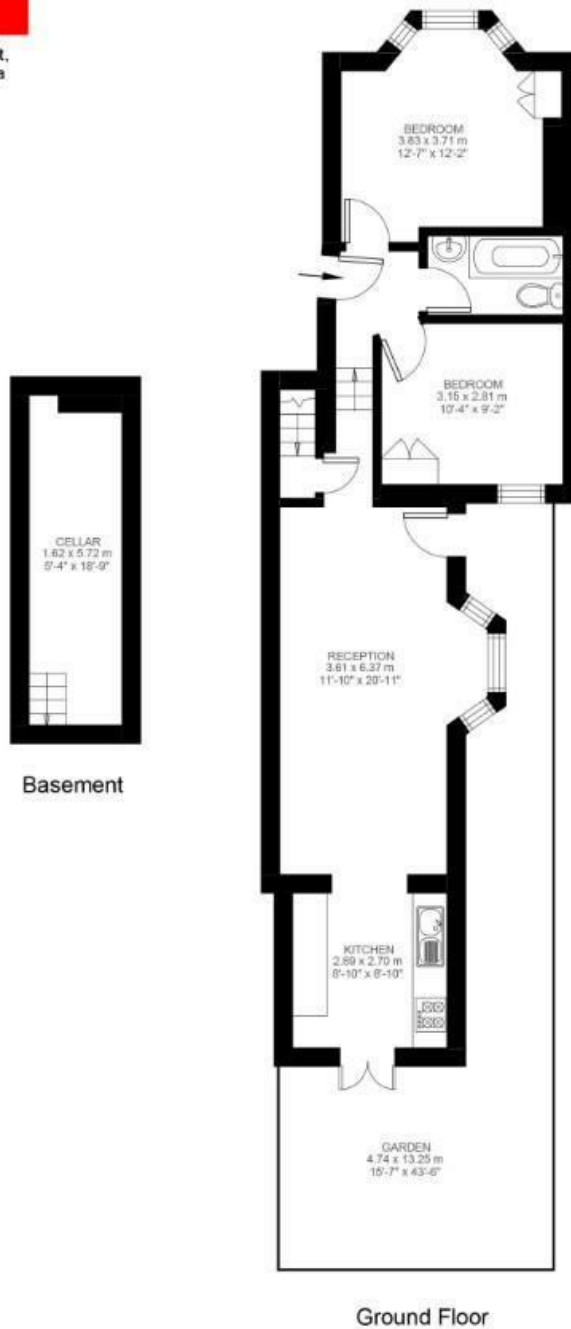
Branksome Road

2 Bedroom Flat

Approx internal area:

751 sqft 70 sqm

While we do try our very best, floor plans are produced as a guide only and we take no responsibility for the precise accuracy with which any property is represented



Branksome Road, Brixton, SW2

