



**Horsford Road, Brixton, SW2**

2 bedroom flat - conversion for sale

**£450,000**

Share of Freehold

## Property Details

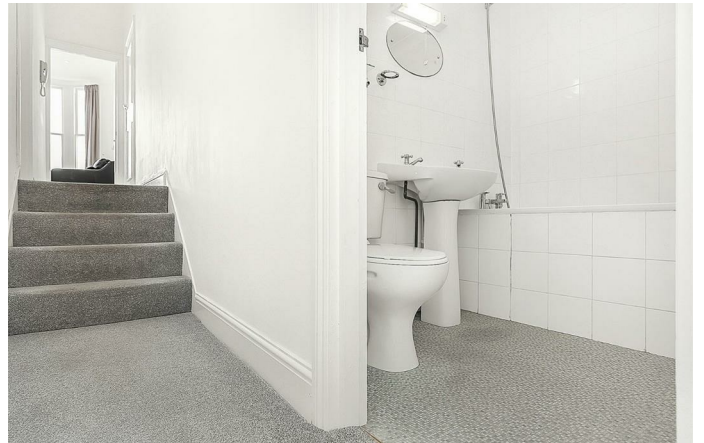
Open-plan living and minimal hallways help to maximise the square footage on offer. Occupying the front of the building and spanning it's entire width is a bright and characterful open-plan reception. High ceilings, a large bay window and a feature fireplace all pay tribute to the charming period in which the original house was built. This flat is ideal for sharers because the communal space is sociable and the bedrooms are separated. There is enough space to dine as well as relax, unwind or host guests with the kitchen tucked to the side, opening out onto the entertaining space. A modern and contemporary finish, some appliances are integrated and there is plenty of storage. Both bedrooms are fairly equal doubles in peaceful positions within the building, overlooking the neighbouring gardens at the rear. The bedrooms share a contemporary bathroom, neutrally decorated and the flat is in good condition throughout.

## Features

- Two double bedrooms
- Secure, first floor flat
- Victorian conversion
- Bright, characterful and airy
- Highly desirable street
- 8 minute walk to central Brixton
- Moments from Brockwell Park
- Fantastic local amenities on Brixton Hill

Council tax band C    EPC rating C (69)







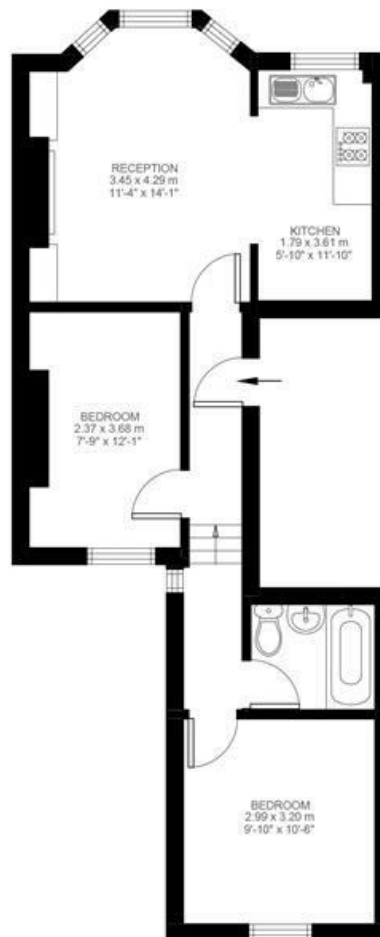
## Horsford Road

### 2 Bedroom Flat

Approx internal area:

**536 sqft 50 sqm**

While we do try our very best, floor plans are produced as a guide only and we take no responsibility for the precise accuracy with which any property is represented



First Floor



Horsford Road, Brixton, SW2

