



Sudbourne Road, Brixton, SW2

5 bedroom house for sale

£999,999

Freehold

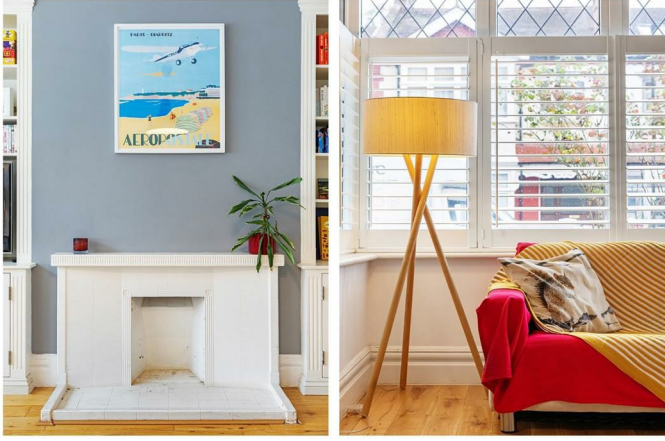
Property Details

A five double bedroom Edwardian house that has been lovingly extended by its current owners, to an exceptional standard. This property boasts over 1650 square feet, making it a fantastic option when compared to other period houses on offer within the area, in terms of space and finish. Sudbourne Road is situated in an extremely popular residential area (Fought over for catchment rights to Sudbourne and Corpus Christi Schools) a five-minute walk from Brixton town centre. The property comprises five double bedrooms, two bathrooms, a separate reception room and a stunning eat-in kitchen diner.

Features

- Five double bedrooms
- Edwardian end of terrace house
- Two bathrooms
- Sought-after location
- Close to transport links
- Within walking distance to a range of excellent schools
- Bright and airy throughout
- Freehold

Council tax band E EPC rating E (50)



Sudbourne Road, Brixton, SW2

K

5 Bed House

Approx internal area:

1668 sqft 155 sqm

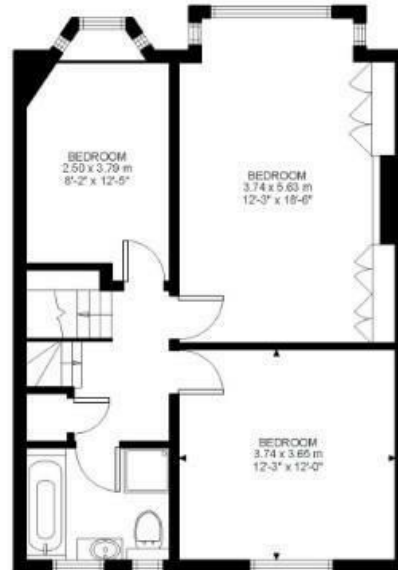
While we do try our very best, floor plans are produced as a guide only and we take no responsibility for the precise accuracy with which any property is represented

(EXCLUDING EAVES STORAGE)
EAVES STORAGE 8.74 SQ.M / 94 SQ.FT
INCLUSIVE TOTAL AREA 163.74 SQ.M / 1762 SQ.FT

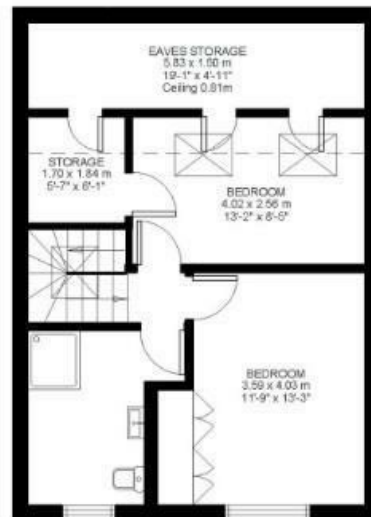
Sudbourne Road



Ground Floor



First Floor



Second Floor



Sudbourne Road, Brixton, SW2

