



Holmewood Gardens, Brixton, SW2

3 bedroom house for sale

£675,000

Freehold

Property Details

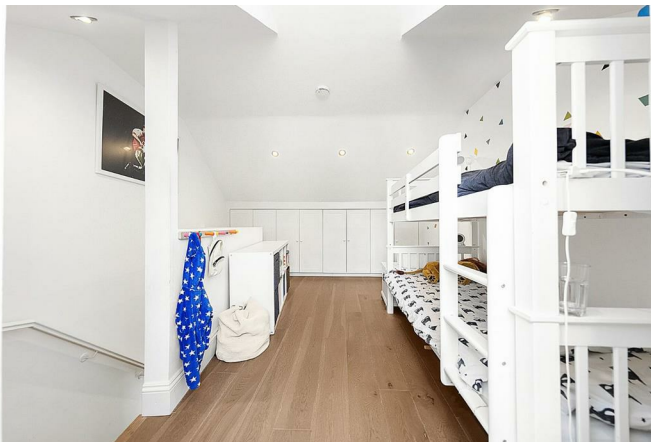
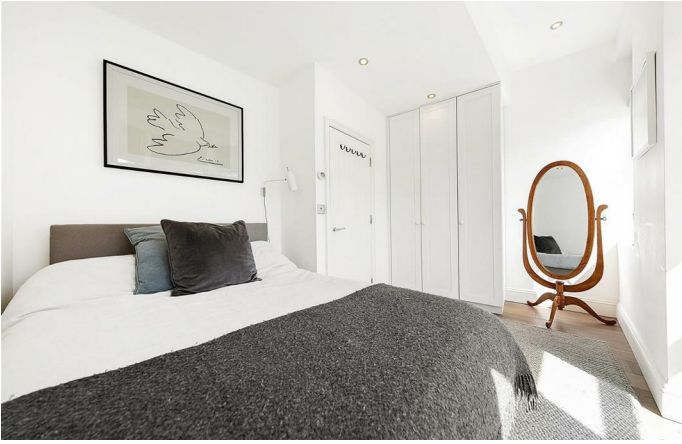
This attractive home offers the best of both worlds; designed with modern living in mind and offering excellent energy performance, whilst also maintaining the charm and character of a typical Victorian terraced house. Sweeping all the way from the front of the property to the garden entrance at the rear, an impressive open-plan living space. The feel of a dual-aspect reception room at the front with plenty of space to relax, unwind and dine is followed on by a large, bright and contemporary kitchen that opens out onto the South-West facing garden. A downstairs WC and some handy storage make use of the square footage under the stairs, every square foot on offer in this property has been savoured and maximised for the purchasers benefit. The garden is a low-maintenance sun trap, a lovely airy space that flows seamlessly when unwinding or entertaining guests. On the upper floors sit three double bedrooms. The principle bedroom is a fantastic size, running the width of the property with a bay window that allows natural light to flood into the room. The property is completed by a modern and inviting family bathroom.

Council tax band D EPC rating B (83)

Features

- Three double bedrooms
- South-West facing private garden
- Mock Victorian terraced house
- Over 880 square feet of internal space
- Modern design merged with characterful features
- Sought-after residential street surrounding a garden square
- Freehold





Holmewood Gardens

K

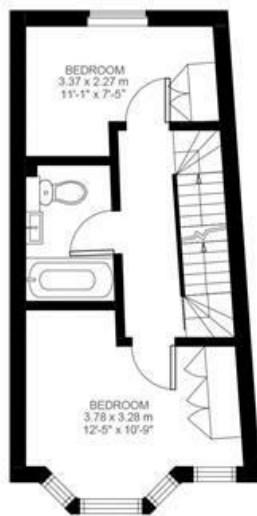
3 Bedroom House

Approx internal area:

885 sqft 82 sqm

(EXCLUDING EAVES STORAGE)
EAVES STORAGE 2.08 SQ.M / 22 SQ.FT
INCLUSIVE TOTAL AREA 84.08 SQ.M / 905 SQ.FT

While we do try our very best, floor plans are produced as a guide only and we take no responsibility for the precise accuracy with which any property is represented



FIRST FLOOR
305 SQ.FT / 28.36 SQ.M



GROUND FLOOR
412 SQ.FT / 38.31 SQ.M



SECOND FLOOR
167 SQ.FT / 15.55 SQ.M



Holmewood Gardens, Brixton, SW2

