



Hayter Road, Brixton, SW2

3 bedroom flat - conversion for sale

£699,950

## Property Details

Securely arranged over the top two floors of an attractive Victorian converted townhouse, this split level apartment offers almost 1300 square feet, three spacious double bedrooms, two bathrooms and a WC. Located on a sleepy and residential road, highly sought-after for its proximity to both Brixton and Clapham as well as the award winning Brockwell Park. The ground floor entrance, a staircase meandering up through the property and rooms with fantastic dimensions make this spacious property feel like a home. Tucked away at the back of the building is the eat-in kitchen diner with room for a table and all you need in terms of mod cons. Sitting adjacent is a convenient WC and stairs lead to the bright and airy reception room with the first of three double bedrooms. The living room spans the entire width of the house and overlooks the pretty Victorian street below. Adjacent, the double bedroom, just like the living room, has impressive high ceilings and is perfectly positioned overlooking the gardens at the rear. Situated on the floors above are two large double bedrooms, a family bathroom and an en-suite bathroom. The total square footage of this bright and airy apartment is considerably larger than a number of freehold houses in the area with significantly higher asking prices and you will be hard-pressed to find many chain-free apartments that compare in size.

Council tax band D

EPC rating (null)

## Features

- Three double bedrooms
- Two bathrooms
- Victorian converted townhouse
- Large kitchen diner and separate reception room
- Nearly 1300 square feet of internal living space
- Split over three floors
- Neutral blank canvas with characterful features
- Sought-after location within walking distance to Brixton and Clapham High Streets
- Close to Brockwell Park and two popular primary schools
- Chain-free





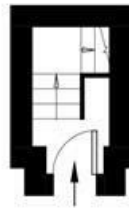
# Hayter Road

## 3 Bedroom Flat

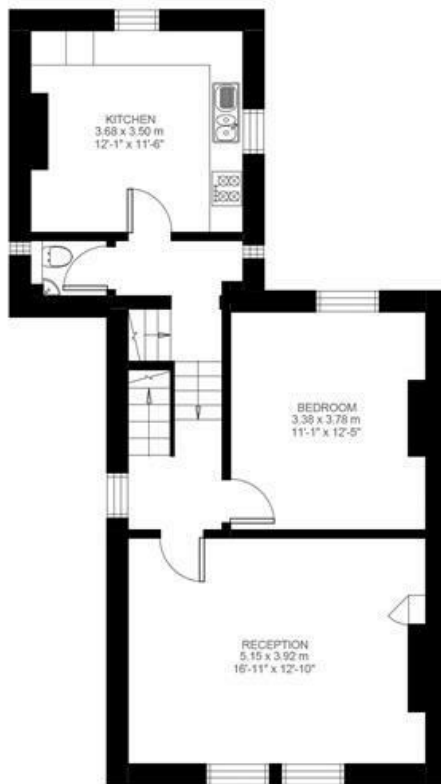
Approx internal area:

**1280 sqft 119 sqm**

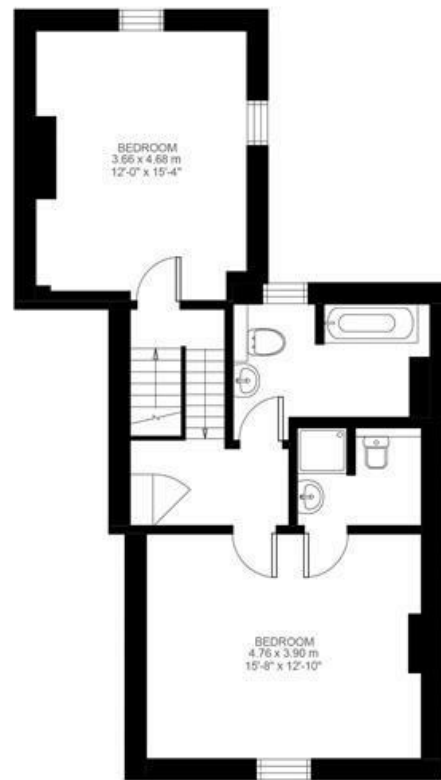
While we do try our very best, floor plans are produced as a guide only and we take no responsibility for the precise accuracy with which any property is represented



Ground Floor



First Floor



Second Floor



Hayter Road, Brixton, SW2

