



Clapham Road, Clapham, SW9

2 bedroom flat - conversion for sale

£550,000

Share of Freehold

Property Details

A truly exceptional example of a two double bedroom conversion flat, arranged over the first floor of a characterful period terraced townhouse, set back quietly from Clapham Road. An extensive and beautifully maintained shared front garden leads up to the communal door, creating separation from the road and offering a pleasant spot in which to enjoy the warmer months. The entertaining area is fantastic, spacious and open-plan, aesthetically pleasing throughout with a brand new kitchen, fully integrated appliances and an abundance of space to dine, relax, unwind and host family and friends. Both bedrooms are tucked away peacefully towards the rear of the building, avoiding any road noise and disturbance. A shiny and modern marble-clad bathroom completes the apartment, finished to a high standard, in keeping with the rest of the property. The flat has well-hidden but extensive storage, a share of the freehold and a share of the leafy garden leading up to the house. With Clapham High Street, Brixton and Stockwell all reachable walking distance, the location cannot be overstated.

Features

- Two double bedrooms
- Period conversion
- Shared garden
- Almost 700 square feet
- Clapham High Street, Brixton and Stockwell all within walking distance
- Clapham Common a short stroll away
- Northern Line, Victoria Line and London Overground
- Share of freehold
- Chain-free

Council tax band C EPC rating (null)





Clapham Road, Clapham, SW9



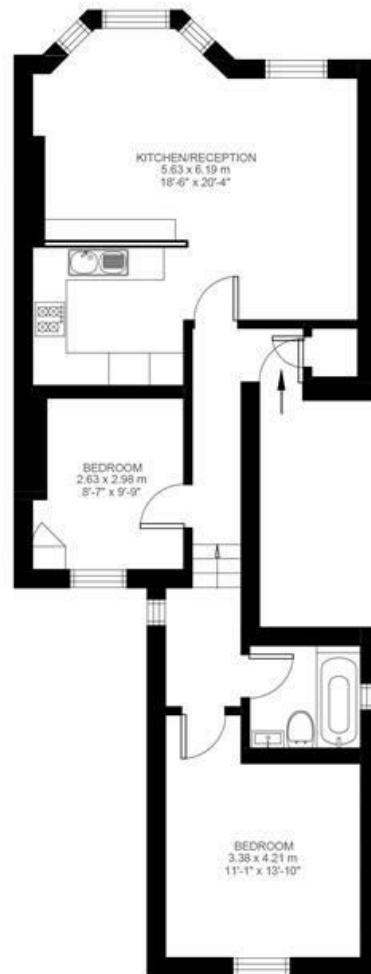
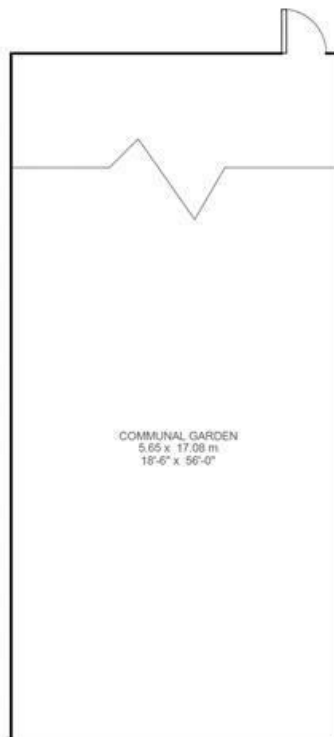
2 Bedroom Flat

Approx internal area:

692 sqft 64 sqm

While we do try our very best, floor plans are produced as a guide only and we take no responsibility for the precise accuracy with which any property is represented

Clapham Road



First Floor



Clapham Road, Clapham, SW9

