

**Sudbourne Road, Brixton, SW2**

2 bedroom maisonette for sale

**£750,000**

Share of Freehold

## Property Details

An appealing open-plan reception occupies one half of this floor, the heart of the home. Embellished in appealing period character such as the large sash windows, high, corniced ceilings and feature fireplaces. One half of the room is occupied by a cosy, comfortable living area that feeds through to an eat-in kitchen on the other side. This dual-aspect room is bright, airy and open, providing the ideal entertaining space or the perfect private sanctuary in which to relax peacefully. The farmhouse-style kitchen is partially integrated, offers great storage options and high quality finishes. The bedrooms, which are located on different floors are both well-proportioned doubles. Fairly equal in size, both spaces benefit from south-facing windows that flood the rooms with sunlight, creating an appealing atmosphere for the occupants. The separation of the rooms mean that this property will be particularly appealing for anyone looking to rent out their spare room or share with friends. A recently refurbished and beautifully finished family-sized bathroom serves this maisonette, plus a further WC close to the entrance of the property.

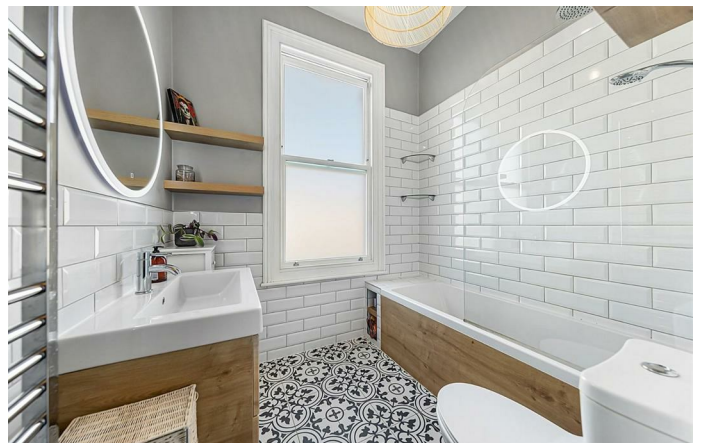
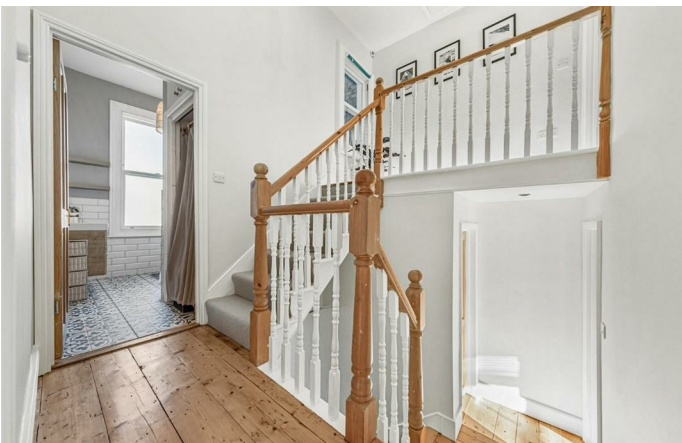
Council tax band D

EPC rating D (66)

## Features

- Victorian conversion
- Two double bedrooms
- Split-level maisonette
- Private entrance
- Characterful features
- Loft space
- Almost 1500 square feet of internal space
- Close to transport links
- Desirable road
- Share of freehold







## Sudbourne Road

### 2 Bedroom Flat

Approx internal area:

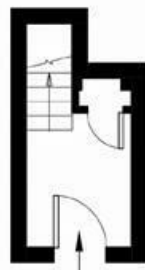
**1487 sq ft 138 sqm**

(INCLUDING LOFT)  
 LOFT 55 SQ.M / 594 SQ.FT  
 EXCLUSIVE TOTAL AREA 83 SQ.M / 891 SQ.FT

While we do try our very best, floor plans are produced as a guide only and we take no responsibility for the precise accuracy with which any property is represented



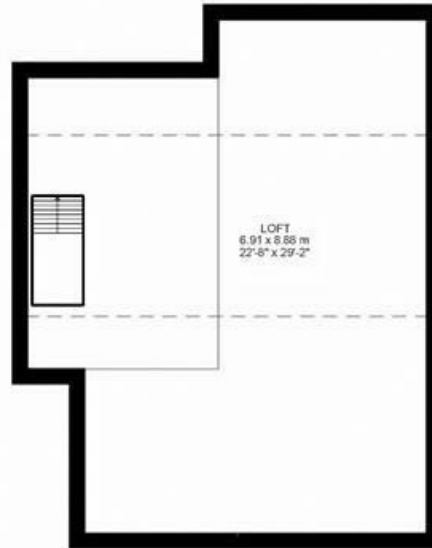
First Floor



Ground Floor



Second Floor



Third Floor





Sudbourne Road, Brixton, SW2

