



Spenser Road, Herne Hill, SE24

£550,000

1 bedroom flat - conversion for sale

Share of Freehold

Property Details

Over 700 square feet of internal space is well distributed for an ideally proportioned one bedroom flat. On entering the property, you are greeted by a dual-aspect, open-plan reception. To the front of the property, a cosy living area, flooded with light thanks to the large and characterful bay window, this lovely sociable space feeds through to a modern kitchen, fully integrated, well equipped and offering plenty of space for a large dining table. The kitchen opens out to the idyllic private garden at the rear of the property. Peacefully residing at the back of the building, surrounded by its own private garden, the spacious bedroom is found. A lovely space that is drenched in light through multiple windows and glass double doors that open up to the outside allowing fresh air to breeze through the flat. A comfortable and modern bathroom completes this fantastic flat.

Features

- One double bedroom
- Bright and airy throughout
- Open plan reception and kitchen/dining area
- Utility cellar/store room
- Private garden
- Close to Brixton and Herne Hill
- Around an 8 minute walk to Herne Hill station
- Share of freehold
- Off-street parking

Council tax band C EPC rating D (65)



Spenser Road, Herne Hill, SE24

K

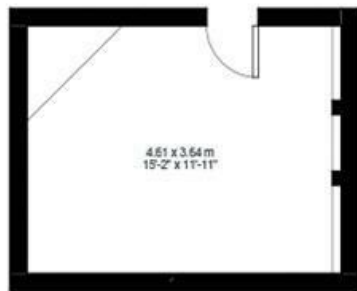
1 Bed flat

Approx internal area:

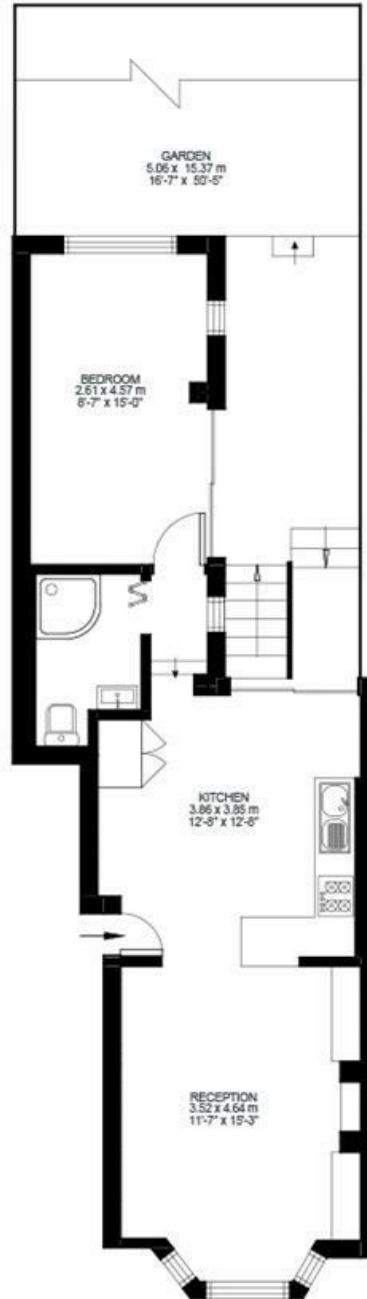
704 sqft 65 sqm

While we do try our very best, floor plans are produced as a guide only and we take no responsibility for the precise accuracy with which any property is represented

Spenser Road



Basement



Ground Floor



Spenser Road, Herne Hill, SE24

