



Herne Hill Road, Herne Hill, SE24

1 bedroom flat - conversion for sale

£379,950

Share of Freehold

Property Details

Endearingly characterful throughout, this charming property maximises on the decent square footage on offer, as opposed to wasting space on unused hallways. An impressive open-plan reception room occupies the front of the building and spans the entire width of the house. Offering ample space to cook, dine, entertain and relax, with a cosy living area. The multiple windows flood this space with sunlight, adding to the ambience. The kitchen is well equipped, with integrated appliances and generous storage. An unusually large double bedroom and modern bathroom complete the rooms in the property. The flat is ideally located close to Herne Hill and minutes from the increasingly popular Loughborough Junction and Ruskin Park. With Brockwell Park, Herne Hill's pubs and restaurants, everything Brixton has to offer and Dulwich all on your doorstep, there is something to cater to all potential purchasers. A lovely flat in a lovely area, only a stone's throw from Herne Hill town centre but far enough away to retain a sleepy, neighbourhood feel. Chain-free.

Council tax band B EPC rating (null)

Features

- One double bedroom
- Victorian conversion
- Bright and airy throughout
- Characterful features
- Close to multiple green spaces
- Three minute walk to Loughborough Junction Station
- Ten minute walk to Denmark Hill station
- Fifteen minute walk to Brixton and Herne Hill
- Chain free
- Share of freehold





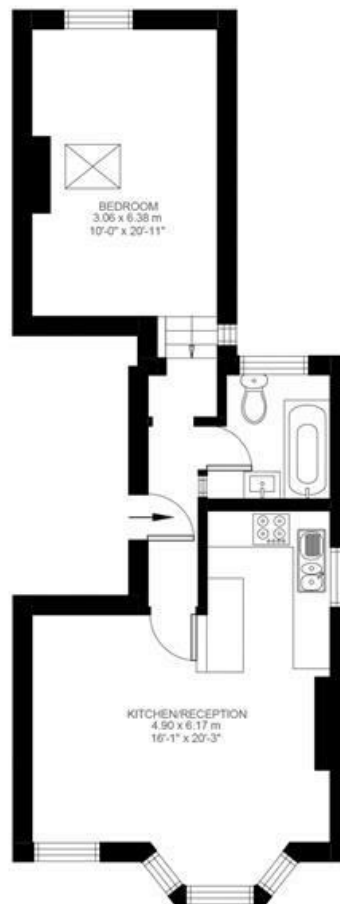
1 Bedroom Flat

Approx internal area:

517 sqft 48 sqm

While we do try our very best, floor plans are produced as a guide only and we take no responsibility for the precise accuracy with which any property is represented

Herne Hill



First Floor



Herne Hill Road, Herne Hill, SE24

