

Stockwell Road, Brixton, SW9

£350,000

1 bedroom flat - conversion for sale

Property Details

Nestled peacefully within a handsome Victorian townhouse conversion, this flat benefits from a private entrance and direct access to the shared garden at the rear. The front of the property is occupied with a bright and spacious reception room, flooded with light through a large bay window. Towards the rear, a comfortable double bedroom over looking the peaceful gardens, a sleek bathroom and a galley kitchen. The kitchen opens out onto the garden with a patio space directly outside the back of this lovely flat. This endearing flat is a fantastic blank canvas, ready for a purchaser to add their own touch over time, resulting in a property that is finished entirely to their own taste. This flat will appeal to a wide range of potential purchasers including first-time buyers, buy-to-let investors or anyone looking for a perfectly located pied a terre.

Features

- One bedroom
- Victorian converted house
- Own front door, private entrance
- Over 500 square feet of internal space
- Shared garden
- Victoria and Northern lines
- Quiet yet central location
- Local amenities in moments
- Chain-free

Council tax band C EPC rating (null)



Stockwell Road, Brixton, SW9



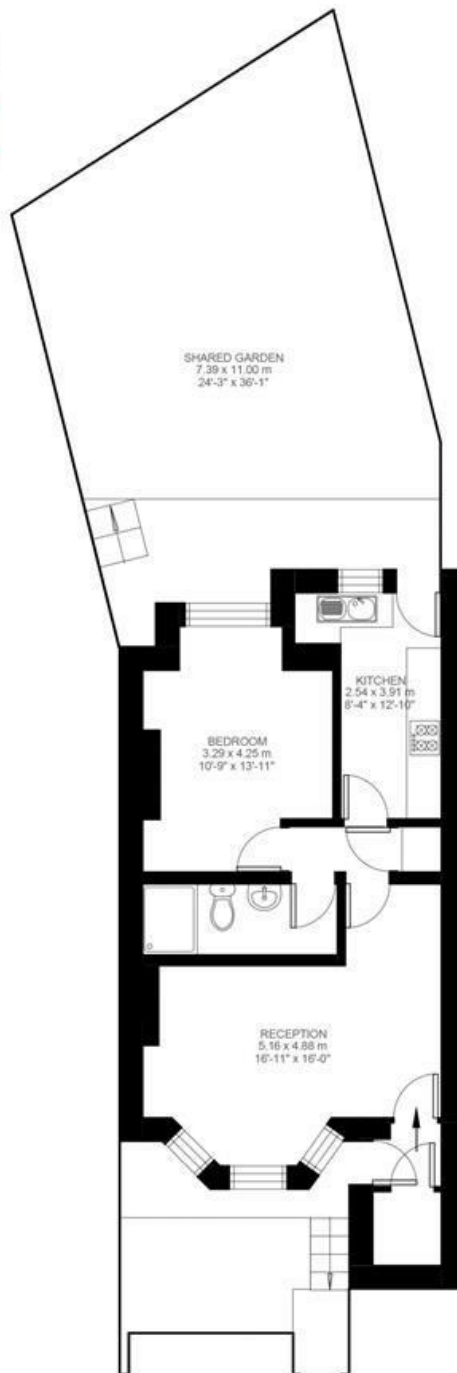
1 Bedroom Flat

Approx internal area:

514 sqft 48 sqm

While we do try our very best, floor plans are produced as a guide only and we take no responsibility for the precise accuracy with which any property is represented

Stockwell Road



Lower Ground Floor



Stockwell Road, Brixton, SW9

