



Stockwell Road, Stockwell, SW9

£350,000

1 bedroom flat - purpose built for sale

Property Details

A perfectly located, one double bedroom flat on Stockwell Road. As far as locations go, it doesn't get much better: equidistant to Stockwell and Brixton tube stations, with both the Victoria and the Northern lines within a few minutes' walk, for fast links into central London. This flat is perfect for anyone who wants to be close to the action – purchasers will have everything this popular area has to offer, on the doorstep. The wonders of Brixton Village and POP Brixton are a couple of minutes' walk away, where purchasers will be able to sample the culinary delights of a different nation's cuisine every day. The green open spaces of the award-winning Brockwell Park are also within walking distance, along with its unrivalled sports facilities and iconic Lido. If none of that is enough to tempt you, the riches of amenities on Clapham High Street, Clapham Old Town and Abbeville village are also in easy reach by foot. A bright open-plan reception room at the front of the property is perfectly formed with large windows and a sleek, modern integrated kitchen. There is ample space to relax and unwind whilst also being able to dine comfortably. The kitchen has all you need in terms of storage options and surface space. The bedroom is generous in size, offering an airy feel and plenty of room for storage, a work from home desk or dressing table. The flat is served by a modern and fully equipped bathroom. This secure, second floor apartment is a fantastic blank canvas, ready for a purchaser to add their own touch over time, resulting in a property that is finished entirely to their own taste. The apartment will appeal to a wide range of potential purchasers including first-time buyers, buy-to-let investors or anyone looking for a perfectly located Pied a Terre.

Council tax band C EPC rating C (79)

Features

- One double bedroom
- Over 500 square feet of internal space
- Secure, modern built block
- Blank canvas and neutrally decorated
- Stockwell, Brixton & Clapham in walking distance
- Walking distance to the Northern and Victoria tube lines
- Local amenities in moments



Stockwell Road

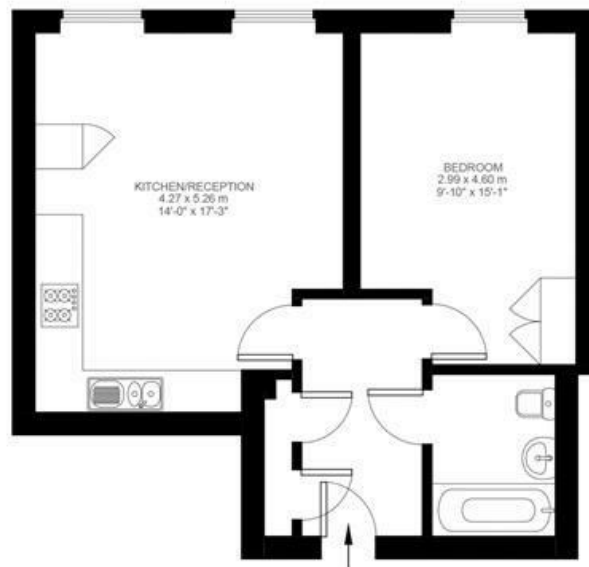
K

1 Bedroom Flat

Approx internal area:

501 sqft 47 sqm

While we do try our very best, floor plans are produced as a guide only and we take no responsibility for the precise accuracy with which any property is represented



Second Floor



Stockwell Road, Stockwell, SW9

