



## Herbert Mews, Brixton, SW2

£485,000

2 bedroom flat - purpose built for sale

### Property Details

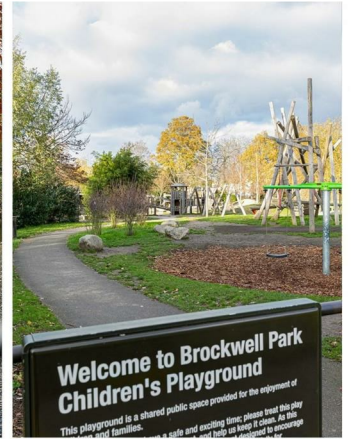
An attractive two double bedroom flat, offering many benefits to potential purchasers. This gated development offers all the bonuses of modern design and the property is ideally located, with an entrance to Brockwell Park on the development, it is truly easy to forget that you are indeed minutes from central Brixton. A smart open-plan reception is the heart of the home, comfortable dimensions to relax and unwind, dine and entertain, with a fully equipped, integrated kitchen opening out onto the space, offering an abundance of storage options and surface space. Both bedrooms are well proportioned, fairly equal spaces. Large enough to double up as home offices whilst still maintaining comfortable sleeping arrangements and plenty of space for storage. The flat is completed by a family-sized modern bathroom.

### Features

- Two double bedrooms
- Popular modern development
- Top floor apartment with lift access
- Over 715 square feet of internal space
- Allocated off-street parking space
- Next to Brockwell Park
- Brixton & Herne Hill amenities in under fifteen minutes

Council tax band D    EPC rating (null)







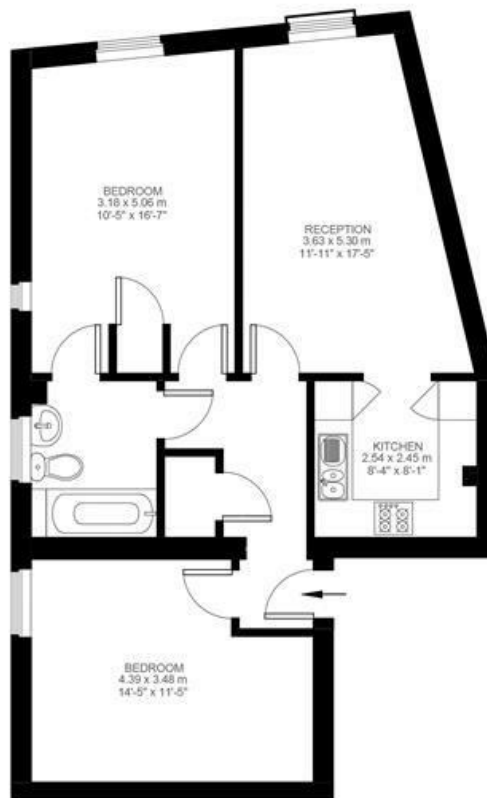
## Herbert Mews

### 2 Bedroom Flat

Approx internal area:

**719 sqft 67 sqm**

While we do try our very best, floor plans are produced as a guide only and we take no responsibility for the precise accuracy with which any property is represented



Third Floor



Herbert Mews, Brixton, SW2

