



Sudbourne Road, Brixton, SW2

3 bedroom house for sale

£975,000

Freehold

Property Details

A large, double-fronted reception room occupies the front of the building with glass double doors at the rear that open onto the leafy, private South-facing garden, allowing the outside to flow in and create a lovely atmosphere. A sleek modern kitchen follows on, offering more than enough storage options, surface space and integrated appliances. There is comfortable dimensions for dining and a handy WC tucked away within the entrance hall. Upstairs, three double bedrooms, two of which are particularly spacious, the third could easily be repurposed to make an ideal principal en-suite, home office or nursery. There is potential to extend not only into the loft but also from the ground floor into the garden, subject to the necessary permissions.

Council tax band E EPC rating (null)

Features

- Three double bedrooms
- Over 1200 square feet of internal space
- Period terraced house
- Large, South facing private garden
- Hugely characterful, bright and airy
- Sought-after location
- Within walking distance to a range of excellent schools
- Close to transport links

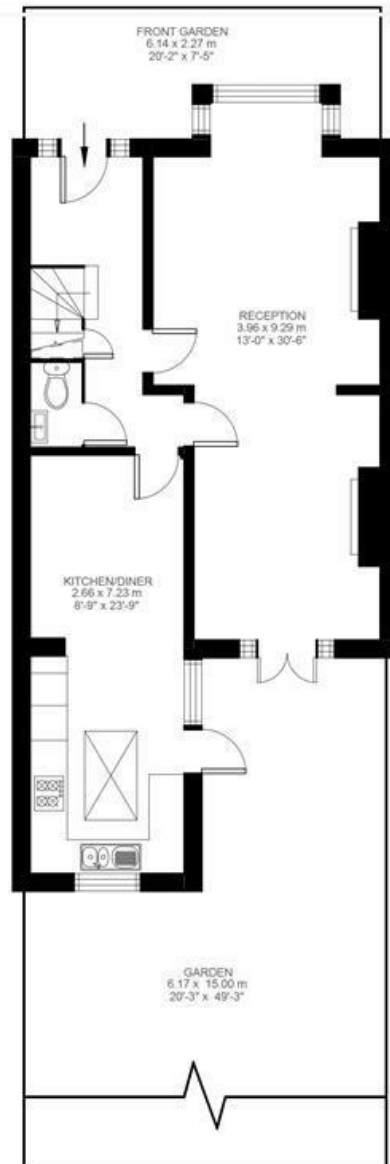


Sudbourne Road, Brixton, SW2

Sudbourne Road, Brixton, SW2

3 Bedroom House

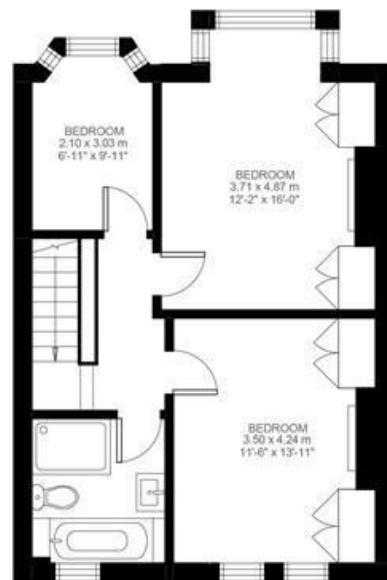
Approximate internal area: **1260 sqft 117 sqm**



Ground Floor



While we do try our very best, floor plans are produced as a guide only and we take no responsibility for the precise accuracy with which any property is represented.



First Floor



Sudbourne Road, Brixton, SW2

