



Clapham Road, Clapham, SW9

£525,000

2 bedroom flat - purpose built for sale

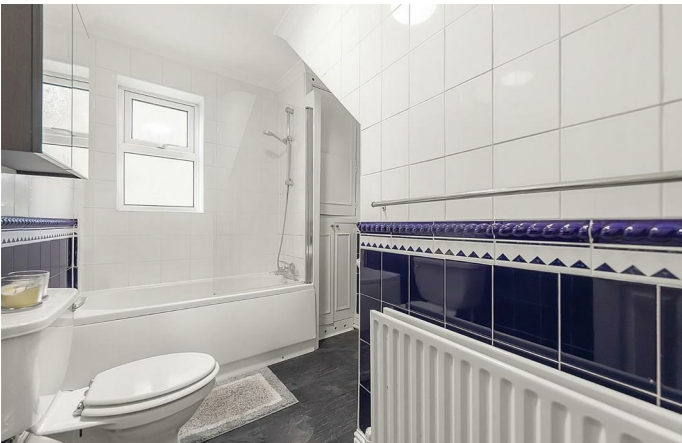
Property Details

A perfectly located two double bedroom, split-level apartment, arranged over the top two floors of a converted building, ideally located within walking distance to Clapham, Stockwell and Brixton High Streets. This lovely apartment has a fantastic layout and feels instantly liveable, the moment you walk through the door. Both bedrooms are well-proportioned comfortable doubles, and feature some convenient built-in storage. The bedrooms share a spacious modern bathroom. Upstairs, the bright and airy, open-plan reception room provides an excellent entertaining space, and the kitchen has all you need in terms of mod cons and storage, with a sociable breakfast bar. Double doors open up onto a fantastic private terrace – ideal for relaxing with a drink and watching the world go by. Last but not least, there is access to substantial loft space, offering fantastic storage solutions for the new owners. With over 750 square feet of internal living space, this property will appeal to a wide range of purchasers from first-time buyers and buy-to-let investors, to anyone upsizing or looking for a conveniently located pied-à-terre.

Council tax band D **EPC rating (null)**

Features

- Two double bedrooms
- Split over two floors
- Bright and airy throughout
- Over 750 square feet of internal living space
- Private Terrace
- A short stroll to the amenities in Clapham North and the High Street
- Ideally located within walking distance to Clapham, Stockwell and Brixton High Streets.





Clapham Road

2 Bedroom Flat

Approx internal area:

761 sqft 71 sqm

While we do try our very best, floor plans are produced as a guide only and we take no responsibility for the precise accuracy with which any property is represented



Clapham Road, Clapham, SW9

