



Canterbury Crescent, Brixton, SW9

£565,000

2 bedroom flat - conversion for sale

Property Details

A spacious and well-presented two-bedroom, two-bathroom flat, in Canterbury Crescent which is a five-minute walk from Brixton's popular hangouts; Pop Brixton, Market Row and Brixton Village. The apartment comprises a spacious reception room, a stylish eat-in kitchen with integrated appliances and space for a large dining table. The two bedrooms are tucked away at the back of the building. The principal bedroom benefits from a modern en-suite bathroom, and the second room is a comfortable double room with built-in storage, currently configured as a home office, but would work perfectly for anyone looking to rent out a second bedroom or share with friends. The bedrooms are separated by the attractive family bathroom, creating a desirable level of privacy. Furthermore, the flat has a dedicated utility space. The entire block was renovated with high-quality workmanship in 2004, installing new double glazing and sound insulation in all of the apartments, meaning low energy costs and no disturbing neighbours if you want to have a dinner party. The flat has close to 800 square feet of internal living space, plus the use of a shared private courtyard at the rear, with bike storage, and will appeal to a wide range of potential purchasers.

Features

- Two double bedrooms
- Two bathrooms
- Almost 800 square feet of internal space
- Victorian mansion block
- Double-glazing and refurbished exterior
- Shared private courtyard with bike storage
- Situated in the heart of Brixton
- Victoria Line within five minutes
- Close to Brixton Village

Council tax band D EPC rating C (73)





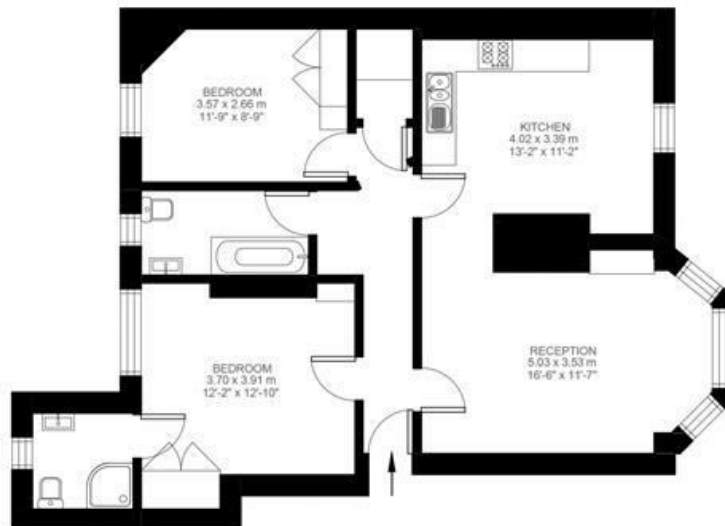
Canterbury Crescent

2 Bedroom Flat

Approx internal area:

790 sqft 73 sqm

While we do try our very best, floor plans are produced as a guide only and we take no responsibility for the precise accuracy with which any property is represented



Second Floor



Canterbury Crescent, Brixton, SW9

