

**Blenheim Gardens, Brixton, SW2**

3 bedroom house for sale

**£1,250,000**

Freehold

## Property Details

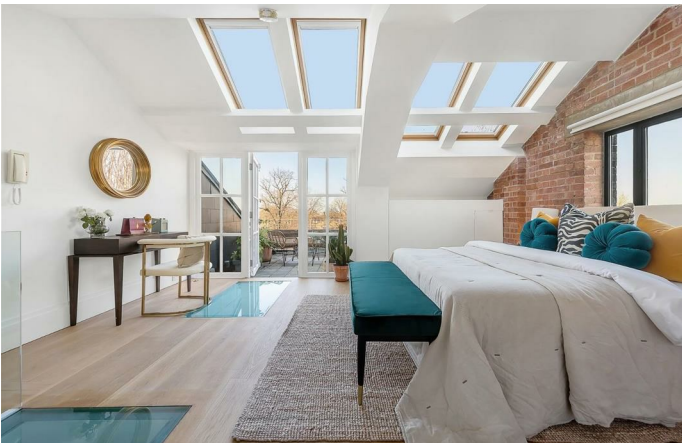
The ground floor comprises a boastful entertaining space with large double doors that open out onto the private patio garden, an industrial style kitchen complete with high-end, integrated appliances and a breakfast bar. The reception area of this open-plan style room is grand but still cosy, and there is ideal dimensions for a large dining table, without any compromise. A WC and large storage cupboard complete the ground floor. Over the second two floors are three generous double bedrooms and a significant amount of further storage. The principal bedroom occupies the top floor of the home, an isolated and stunning space with multiple sky lights and French doors that open straight onto a serene roof terrace. The first floor comprises two further bedrooms, one spanning the entire width of the property and whilst the other is still a large double it could easily be repurposed as a home-office, dressing room or indeed anything the purchaser requires. The property is completed by a luxury bathroom adorned with the highest quality of finishes, a walk-in shower and separate bathtub. The property also comes with a private, off street parking space.

## Features

- Three double bedrooms
- Unique warehouse conversion
- Over 1500 square feet of internal space
- Private courtyard garden and roof terrace
- Gated development with off-street parking
- Fantastic views
- Close to transport links
- Freehold
- Chain-free

Council tax band F    EPC rating D (58)









Blenheim Gardens, Brixton, SW2

**Blenheim Gardens, Brixton, SW2**

**3 Bedroom House**

Approximate internal area: **1578 sqft 147 sqm**

Approximate eaves storage: **99 sqft 9 sqm**

Approximate total internal area: **156 sqm 1681 sqft**



While we do try our very best, floor plans are produced as a guide only and we take no responsibility for the precise accuracy with which any property is represented.



Blenheim Gardens, Brixton, SW2

