



## Belvedere Place, Brixton, SW2

£499,950

2 bedroom flat - purpose built for sale

### Property Details

This apartment, securely nestled within this popular development and overlooking the manicured communal gardens, has plenty of natural light and a spacious entrance hall, off which open all rooms, including an open-plan reception room with a west-facing Juliet balcony and a separate, modern and well-equipped kitchen. The master bedroom is a great size and comes with an en-suite bathroom. The second bedroom is a great option for anyone looking to rent out a room, guest bedroom or child's bedroom. Last but not least there is a contemporary family bathroom. With the fantastic bonus of an allocated, off-street parking space as well as ample secure bike storage, sociable living space, plus an unrivalled, central location, this property really does have it all.

### Features

- Two double bedrooms
- Two bathrooms
- Juliet balcony
- Quiet mews development
- Communal gardens
- Off-street allocated parking
- Bike storage
- Central location, close to the action
- Walking distance to Northern and Victoria lines

Council tax band D    EPC rating B (82)





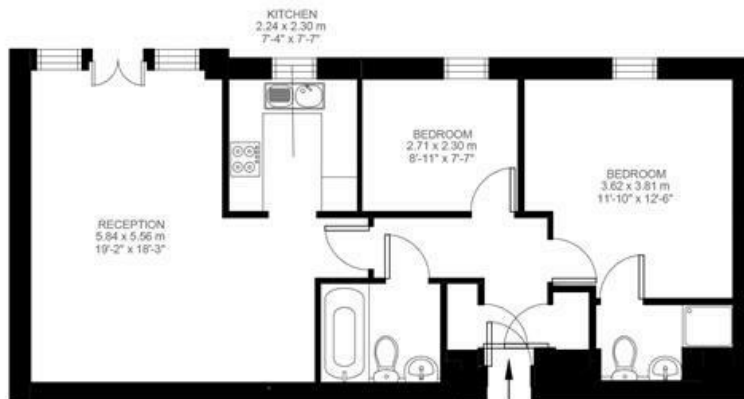
## Belvedere Place

### 2 Bedroom Flat

Approx internal area:

**682 sqft 63 sqm**

While we do try our very best, floor plans are produced as a guide only and we take no responsibility for the precise accuracy with which any property is represented



Second Floor



Belvedere Place, Brixton, SW2

