



**Dulwich Road, Herne Hill, SE24**

1 bedroom flat - conversion for sale

**£475,000**

Share of Freehold

## Property Details

There is comfortable dimensions to relax, unwind, dine and entertain, with pleasant views over the park. A decent kitchen follows on, abundant in surface space and storage options, with the addition of a trendy breakfast bar for more casual dining. Integrated appliances make the most of the comfortable dimensions on offer. Having a bedroom that mirrors the size of your entertaining space is truly a luxury. A large bay window floods the room with light, there is significant built-in storage plus space for more if required, or perhaps a home office area within this tranquil and appealing bedroom. The bathroom is recently refurbished, finished with trendy tiling, high end fixtures and tasteful tones. The flat is double-glazed throughout, has access to a large storage cupboard within the communal area and comes with a share of the freehold.

## Features

- One large bedroom
- Over 600 square feet of internal space
- Bright and characterful
- Views over neighbouring Brockwell Park
- Tastefully finished throughout
- Victorian conversion
- Short walk to Herne Hill & Brixton
- Highly desirable location
- Share of freehold
- Chain-free

Council tax band C      EPC rating (null)





Dulwich Road, Herne Hill, SE24

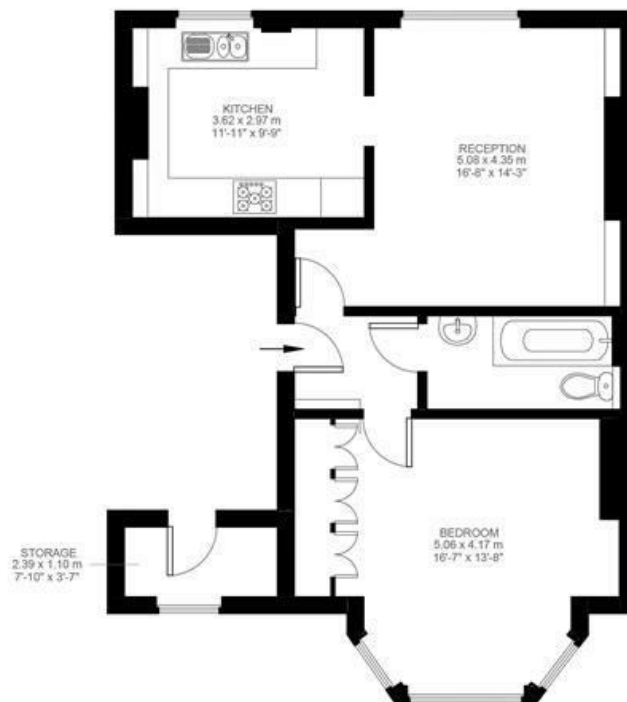
**Dulwich Road, Herne Hill, SE24**

**1 Bedroom Flat**

Approximate internal area: **616 sqft 57 sqm**

Approximate Storage: **28 sqft 3 sqm**

Approximate total internal area: **60 sqm 646 sqft**



First Floor



While we do try our very best, floor plans are produced as a guide only and we take no responsibility for the precise accuracy with which any property is represented.



Dulwich Road, Herne Hill, SE24

