



Spenser Road, Herne Hill, SE24

2 bedroom flat - conversion for sale

£500,000

Share of Freehold

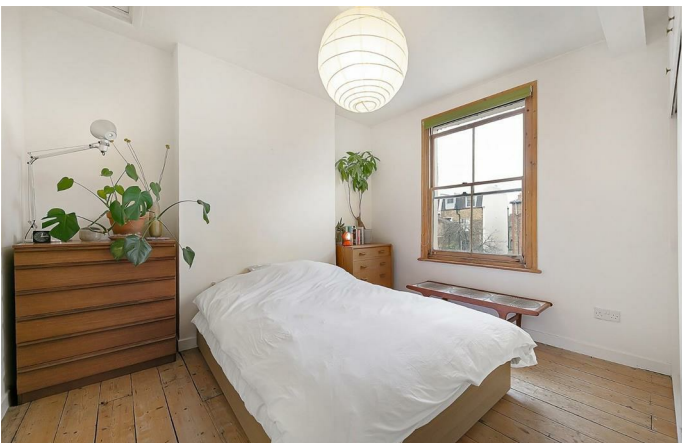
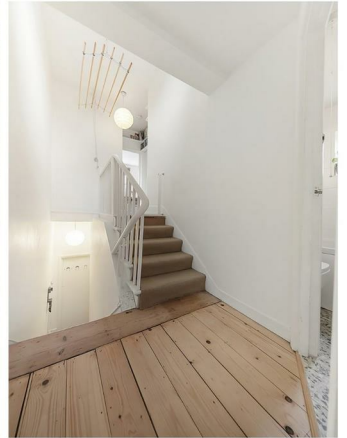
Property Details

The square footage is well distributed for a comfortably proportioned two bedroom flat. To the front of the property, the open-plan reception is the heart of the home. A cosy living area, flooded with light thanks to the large and characterful sash windows, exposed wood flooring and high ceilings. The room feels spacious and airy, with a modern kitchen occupying one side, semi-integrated, well equipped and offering plenty of space for a large dining table. Peacefully residing at the back of the building, with views over the neighbouring gardens below, both bedrooms. Ideally separated by a fully equipped, contemporary bathroom meaning that privacy is available and therefore the flat is ideal as a buy-to-let or for sharers.

Features

- Two double bedrooms
- Victorian conversion
- Seconds from Brockwell Park
- Bright and airy throughout
- Open plan reception and kitchen/dining area
- Close to Brixton and Herne Hill
- Around an 8 minute walk to Herne Hill station
- Share of freehold

Council tax band C EPC rating D (60)

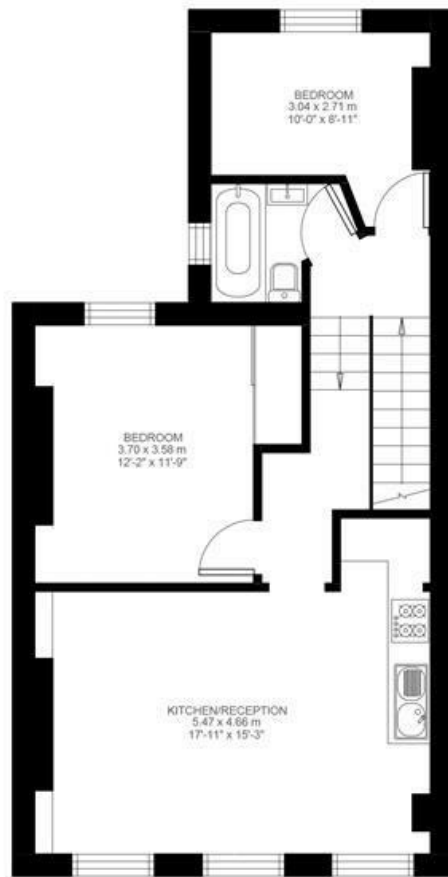


Spenser Road, Herne Hill, SE24

Spenser Road, Brixton, SE24

2 Bedroom Flat

Approximate internal area: 590 sqft 55 sqm



Entrance To First Floor

First Floor



While we do try our very best, floor plans are produced as a guide only and we take no responsibility for the precise accuracy with which any property is represented.

Spenser Road, Herne Hill, SE24

