



Elm Park, Brixton, SW2

3 bedroom flat - conversion for sale

£715,000

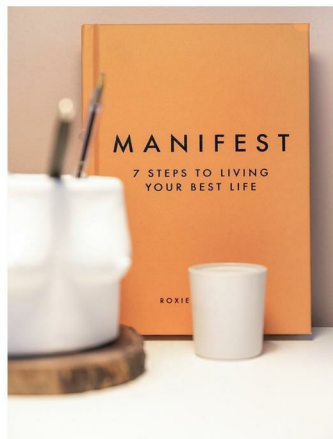
Property Details

There is a substantial reception room, within the large open-plan space on the first floor. With ample room to relax, dine and entertain, this inviting room is sure to be used on a regular basis. Tucked just around the corner, a fresh and contemporary kitchen. The property boasts two comfortable double bedrooms, one of which is particularly large and complete with an en-suite bathroom. The second is still a usable double, making the property an ideal investment for anyone looking to rent out a room or share with friends. The smaller third bedroom is a fantastic bonus, whilst it fits a double bed, it would be perfect for use as a study, dressing room, nursery etc., and there is the addition of a modern family-sized bathroom.

Features

- Three double bedrooms
- Victorian conversion
- Split-level, top floor flat
- Two bathrooms plus a WC
- Over 1100 square feet of internal space
- Private roof terrace
- Bright and well-presented throughout
- Popular residential road
- Close to Brockwell Park
- Chain-free

Council tax band C EPC rating C (74)





Elm Park, Brixton, SW2

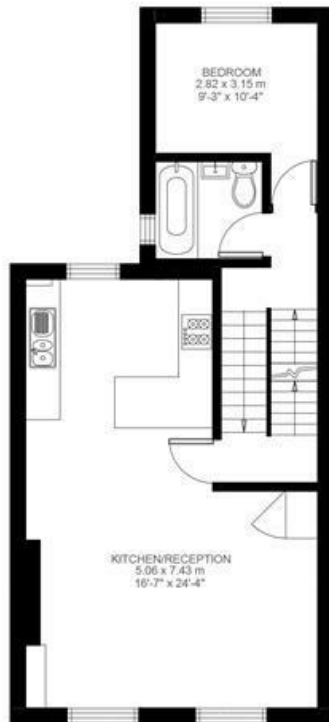
Elm Park, Brixton, SW2

3 Bedroom Flat

Approximate internal area: **1040 sqft 97 sqm**

Approximate eaves storage: **83 sqft 8 sqm**

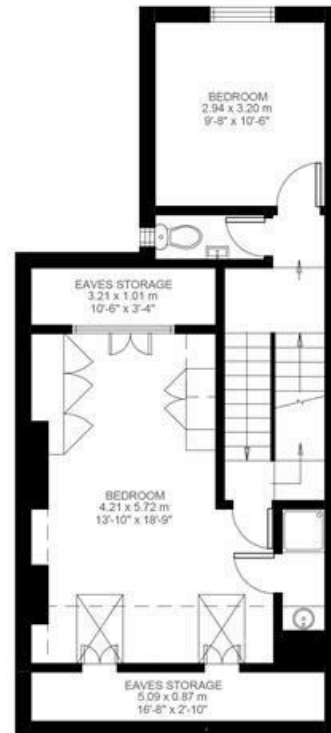
Approximate total internal area: **105 sqm 1127 sqft**



First Floor



Entrance To First Floor



Second Floor



Second Floor/ Roof Terrace



While we do try our very best, floor plans are produced as a guide only and we take no responsibility for the precise accuracy with which any property is represented.

Elm Park, Brixton, SW2

