



Trent Road, Brixton, SW2

2 bedroom flat - conversion for sale

£499,950

Share of Freehold

Property Details

The charming flat will tick boxes for multiple purchases, offering great dimensions and a smart finish throughout, plus it is flooded with natural light. The open-plan reception is no exception, the ideal spot to entertain or relax and unwind with plenty of space to dine, cook and lounge, with views displayed over the attractive period terraces below. The kitchen is fully equipped, with integrated appliances and plenty of storage. Two well-proportioned double bedrooms occupy the other half of the property, both comfortable doubles with plenty of space for storage options and work from home desks if required. The bathroom is stylish and modern, and with over 700 square feet on offer, the property will appeal to a wide range of potential purchasers. The property is in fantastic condition throughout, offering tasteful décor, meaning the purchaser can move in hassle-free and stamp their own mark over time.

Council tax band D EPC rating (null)

Features

- Two double bedrooms
- Victorian conversion
- Top floor flat
- Over 700 square feet
- Local amenities of Brixton Hill close by
- Highly sought-after road, minutes from the heart of Brixton
- Close to Brockwell Park
- Easy access to the Victoria Line
- Share of freehold

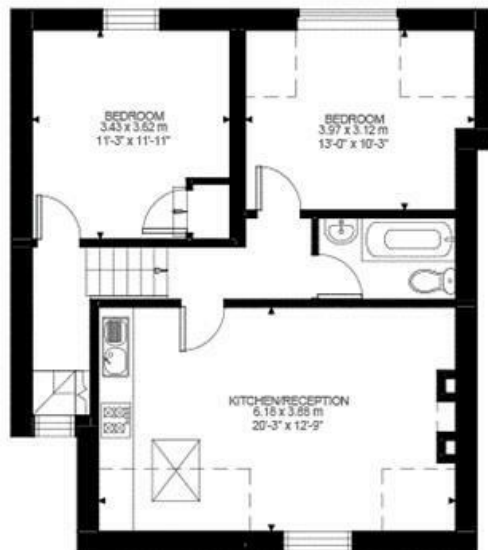


Trent Road, Brixton, SW2

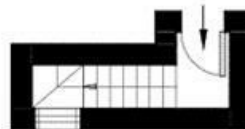
Trent Road, Brixton, SW2

2 bedroom flat

Approximate internal area: 710 sqft 66 sqm



Second Floor



Entrance To Second Floor



While we do try our very best, floor plans are produced as a guide only and we take no responsibility for the precise accuracy with which any property is represented

Trent Road, Brixton, SW2

