



Ballater Road, Brixton, SW2

2 bedroom flat - conversion for sale

£625,000

Share of Freehold

Property Details

The internal space is split over two floors which adds to an airy and spacious feel throughout. At the front of the property is the charming reception room, complete with new wooden shutters, a feature fireplace and a pretty bay window that floods the room with light. With ample room in which to relax, this room will be used on a regular basis. Adjacent, the main bedroom is quietly tucked away and benefits from some fantastic built-in wardrobes. To the rear of the property is the contemporary eat-in kitchen, with plenty of storage and space for a dining table. Double glazed French doors allow access onto the peaceful private garden, a low-maintenance space ideal for relaxing with a drink throughout the warmer months of the year. Upstairs on the first floor is the second bedroom - ideal for use as a guest room, study or nursery. A well-appointed bathroom completes the rooms within this lovely flat. The property benefits from an end-of-terrace position, meaning there is side-access into the garden, ideal for bikes, muddy dogs and gardening. There is also access to a cellar as well as a garden shed, adding generous storage options.

Features

- Two double bedrooms
- Victorian conversion
- Split level flat
- Private garden
- Bright and airy atmosphere throughout
- Equidistant to Brixton and Clapham
- Victoria line, Northern line and London Overground in minutes
- Local amenities of Acre Lane on the doorstep
- Share of freehold

Council tax band C EPC rating D (64)



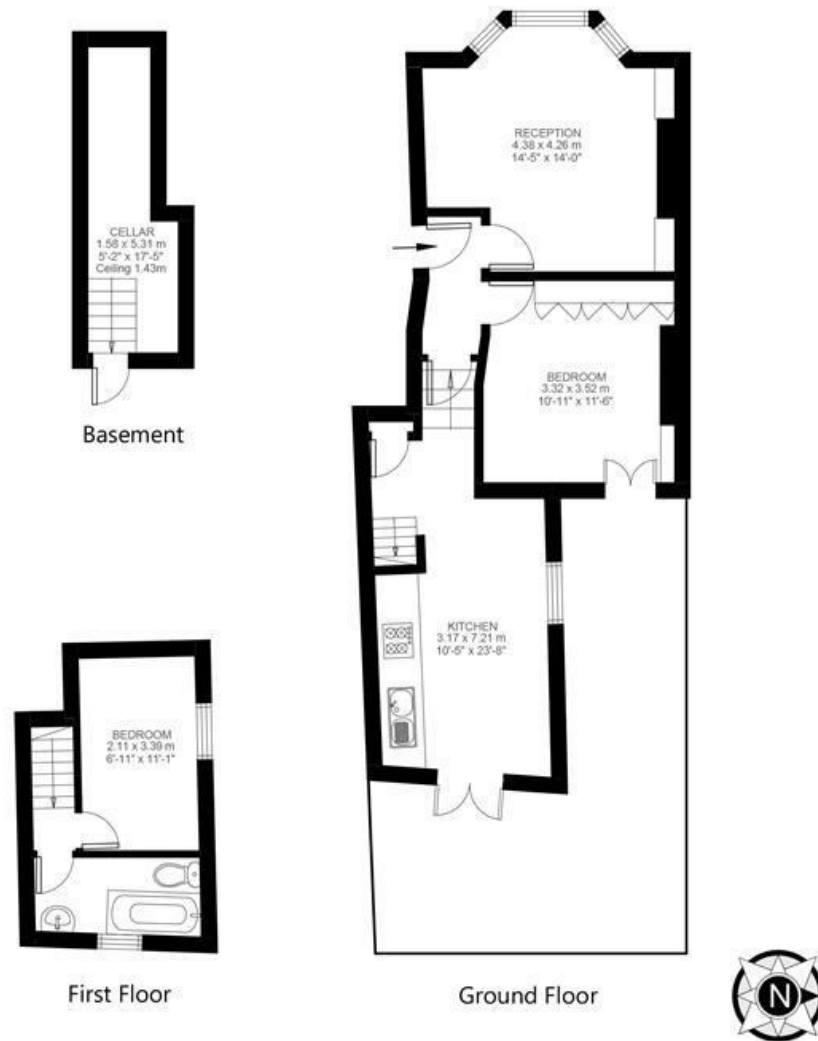


Ballater Road, Brixton, SW2

Ballater Road, Brixton, SW2

2 Bedroom Flat

Approximate internal area: **754 sqft 70 sqm**



While we do try our very best, floor plans are produced as a guide only and we take no responsibility for the precise accuracy with which any property is represented.

Ballater Road, Brixton, SW2

