



Plato Road, Brixton, SW2

3 bedroom flat - conversion for sale

£585,000

Property Details

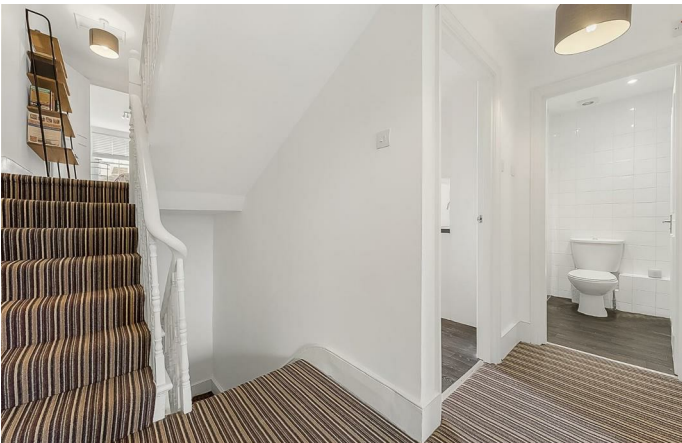
An attractive and well-presented three double bedroom, two bathroom flat, arranged over the top two floors of a charming Victorian terraced house on the centrally located Plato Road. The house itself boasts an attractive façade and benefits from almost 900 square feet of internal space. The first floor of the flat offers the living spaces of the property, a generous reception spanning the width of the building and brilliantly bright with multiple sash windows. The room provides plenty of space to relax unwind, host and dine. The kitchen is tucked just around the corner, modern and inviting. One of the two bathrooms is conveniently located on this floor. On the upper floor, three well-proportioned double bedrooms and the second bathroom. This property would be ideal for sharing or as a buy-to-let as the bedrooms are fairly equal in size and share two bathrooms. The flat is fresh and neutrally decorated throughout, meaning it is ready to move into where the purchaser can stamp their own mark over time.

Council tax band D

EPC rating C (72)

Features

- Three double bedrooms
- Victorian conversion
- Split-level
- Almost 900 square feet of internal space
- Bright and neutrally decorated throughout
- Share of freehold
- Clapham and Brixton High Streets in minutes
- Victoria line, Northern line and London overground in minutes
- Local amenities of Acre Lane
- Chain-free





Plato Road

3 Bedroom Flat

Approx internal area:

885 sqft 82 sqm

While we do try our very best, floor plans are produced as a guide only and we take no responsibility for the precise accuracy with which any property is represented



First Floor

Second Floor



Plato Road, Brixton, SW2

