

Courtenay House, New Park Road,

£325,000

1 bedroom flat for sale

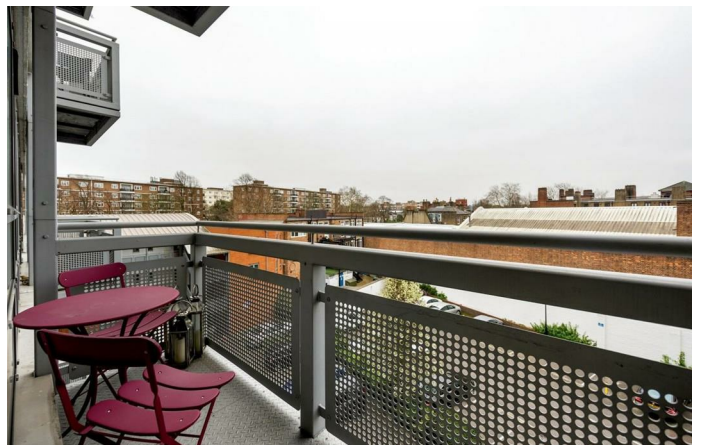
Property Details

With nearly 600 square feet of usable internal living space, this property has good dimensions and comprises a double bedroom, a modern bathroom, a contemporary kitchen and a bright living room with direct access onto a private South-facing balcony. This secure building benefits from a stunning shared roof terrace with 360-degree panoramic views across the London skyline, CCTV and an on-site porter. The property is in great condition and purchasers will have Brixton town centre within a fifteen-minute walk down Brixton Hill. Clapham, Balham and Streatham Hill are all within walking distance.

Features

- Bright and airy throughout
- South-facing balcony
- Communal roof terrace
- 360 degree views across the London skyline

Council tax band C EPC rating B (81)





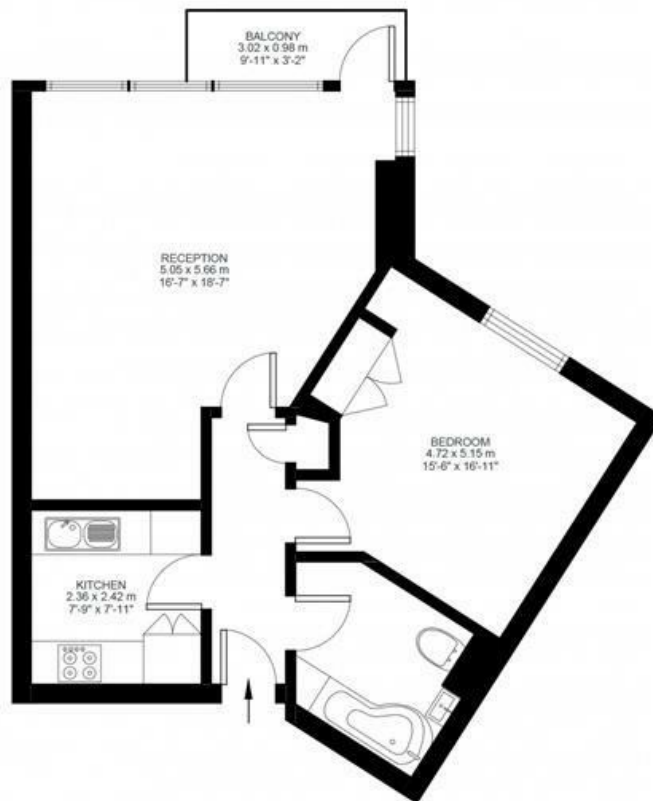
New Park Road

1 Bed flat

Approx internal area:

594 sqft 55 sqm

While we do try our very best, floor plans are produced as a guide only and we take no responsibility for the precise accuracy with which any property is represented



Third Floor



Courtenay House, New Park Road, London, SW2

