

**Herne Hill Road, Herne Hill, SE24****£550,000**

2 bedroom maisonette for sale

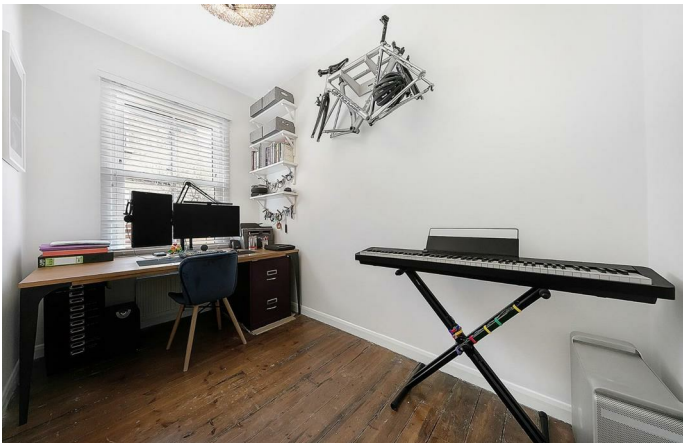
## Property Details

This period property boasts a charming mix of endearing character and stylish, modern design. A cosy but generous reception occupies the front of the property, an ideal space to relax, unwind or entertain guests, with high ceilings and a pretty feature log-burner. Large windows flood the room with natural light, creating an airy atmosphere. Adjacent, the principal bedroom offers fantastic and well thought-out storage options, with comfortable dimensions for a dressing table or a work-from-home space if required. There is a recently refurbished, modern and stylish, tiled family bathroom tucked away at the rear, neighbouring the second bedroom. The kitchen is a particularly appealing space, with great storage options and is finished in a tasteful navy blue and marble style counter top. The property is completed by a charming, South-West facing garden.

**Council tax band C**    **EPC rating (null)**

## Features

- Two bedrooms
- Victorian maisonette
- Almost 750 square feet of internal space
- Private, South-West facing garden
- Characterful and stylish throughout
- Close to multiple green spaces
- Minutes from Loughborough Junction Station
- Denmark Hill and Brixton within easy walking distance

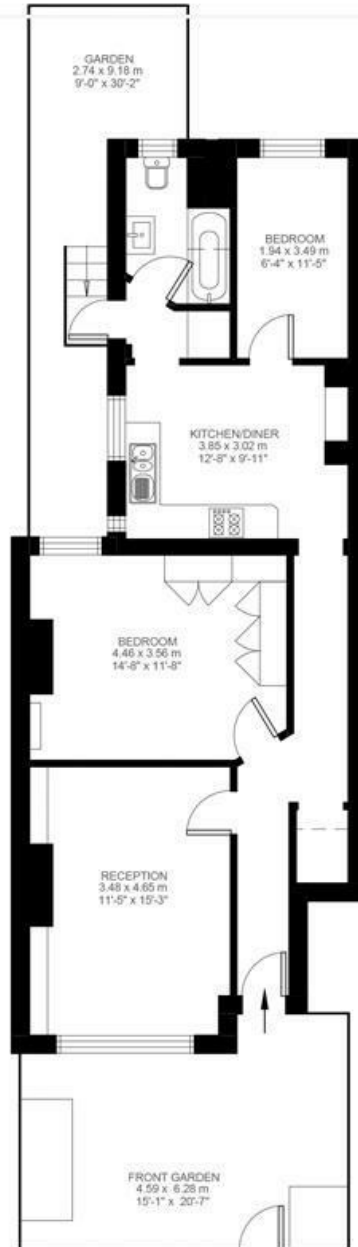


Herne Hill Road, Herne Hill, SE24

Herne Hill Road, Herne Hill, SE24

2 Bedroom Flat

Approximate internal area: 743 sqft 69 sqm



Ground Floor



While we do try our very best, floor plans are produced as a guide only and we take no responsibility for the precise accuracy with which any property is represented.

Herne Hill Road, Herne Hill, SE24

