

Ballater Road, Brixton, SW2

£650,000

3 bedroom flat - conversion for sale

Property Details

A fantastic split-level, three double bedroom apartment, arranged over the top floors of a handsome Victorian terraced house, ideally located between Brixton and Clapham High Streets. The first floor comprises a contemporary and partially integrated kitchen, a convenient breakfast bar, built-in storage and a large sash window that displays views of the neighbouring gardens below. The large reception spans the width of the property and benefits from a characterful bay window plus fantastic dimensions for entertaining. The room also provides space for a more formal dining option. On the second floor, there are three well-proportioned double bedrooms that share a modern family-sized bathroom. With over 900 square feet of internal space split over various floors and bedrooms tucked away on different levels at the front and back of the building, this spacious apartment will appeal to anyone looking to rent out additional rooms or share with friends.

Features

- Three double bedrooms
- Split-level
- Victorian conversion
- Over 900 square feet of internal space
- Bright and airy throughout
- Sought-after location
- Equidistant to Clapham and Brixton
- Access to Northern and Victoria Lines

Council tax band D EPC rating (null)

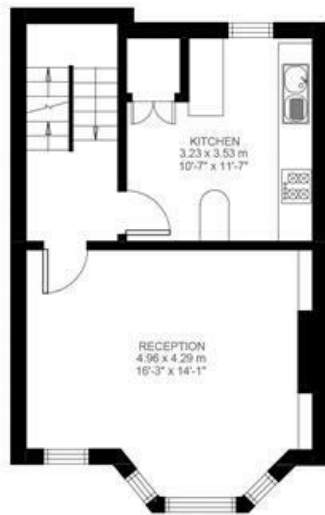


Ballater Road, Brixton, SW2

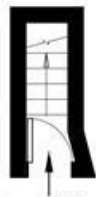
Ballater Road, Brixton, SW2

3 Bedroom Flat

Approximate internal area: 917 sqft 85 sqm



First Floor



Ground Floor



Second Floor



While we do try our very best, floor plans are produced as a guide only and we take no responsibility for the precise accuracy with which any property is represented.

Ballater Road, Brixton, SW2

