



Elm Park, Brixton, SW2

2 bedroom flat for sale

£600,000

Property Details

Both bedrooms are a great size, one overlooking the Victorian terrace row at the front and the other peacefully tucked at the rear. The principal bedroom is considerably large, with built-in storage and a feature fireplace. As demonstrated by the current owners, the second bedroom is still a fantastic size but can be easily repurposed to suit the purchaser's requirements. A sleek and stylish modern bathroom that has been recently renovated offers an appealing attention to detail, including a Bettle steel bath, a backlit heated mirror and integrated shelving with modern downlighting. The entire property is a stunning combination of high-end modern finishes and endearing Victorian charm, from the feature fireplaces to the high, corniced ceilings and a lovely bay window that floods the reception room with sunlight. The log burner is sure to be used on a regular basis during the colder months, adding a really cosy feel to this spacious room which is ideal for entertaining. The kitchen follows suit, having been recently refurbished with high-spec integrated appliances and stylish, tasteful tiling.

Features

- Two double bedrooms
- Split-level
- Characterful features
- Bright and airy
- Beautifully finished throughout
- Popular residential road
- Close to Brockwell Park

Council tax band D

EPC rating E (52)

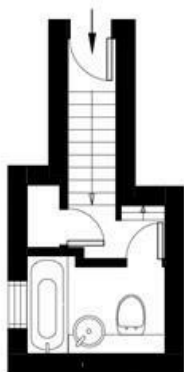


Elm Park, Brixton, SW2

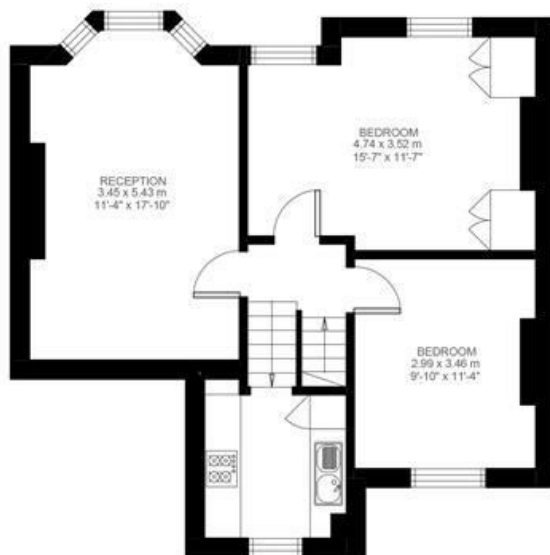
Elm Park, Brixton, SW2

2 Bedroom Flat

Approximate internal area: 704 sqft 65 sqm



Entrance To First Floor



First Floor



While we do try our very best, floor plans are produced as a guide only and we take no responsibility for the precise accuracy with which any property is represented.

Elm Park, Brixton, SW2

