



Arodene Road, Brixton, SW2

£495,000

2 bedroom flat - conversion for sale

Property Details

The separate reception room is rich in character and flooded with light through a large bay window. High ceilings, a stunning feature fireplace and wooden floorboards add to the appealing ambience in this spacious room, offering a cosy feel and comfortable dimensions to relax, unwind, dine and entertain. The reception feeds through to a conveniently located contemporary galley kitchen. Towards the rear of the flat, two well-proportioned double bedrooms with South-West facing positions, allowing sun to filter through into the rooms into the later hours of the day. The principal bedroom is a particularly appealing space, complete with bespoke storage. The property is completed by a modern and inviting three-piece bathroom. This property is of a typical layout found in these handsome terraced houses and the interior has been meticulously cared for by the current owner, in superb condition and finished with stylish, tasteful décor throughout.

Features

- Two double bedrooms
- Victorian conversion
- Tastefully finished throughout
- Bright and characterful
- Sought-after quiet residential street
- Close to Brockwell Park
- Central Brixton in minutes
- Victoria Line
- Chain-free

Council tax band C EPC rating (null)



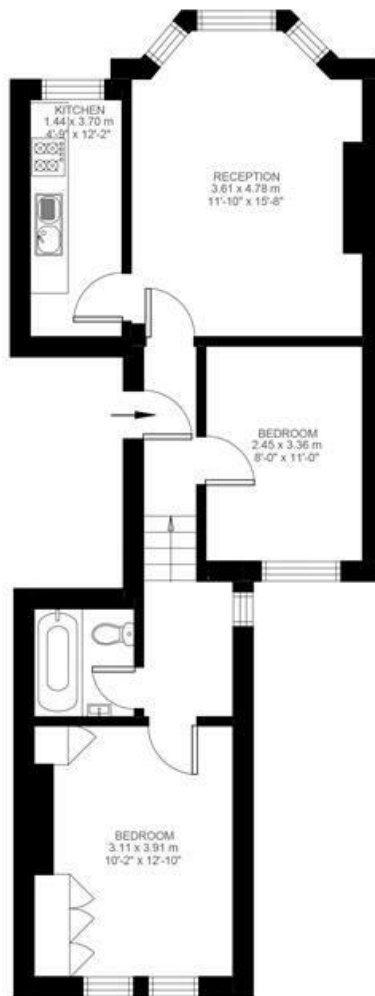


Arodene Road, Brixton, SW2

Arodene Road, Brixton, SW2

2 Bedroom Flat

Approximate internal area: 579 sqft 54 sqm



First Floor



While we do try our very best, floor plans are produced as a guide only and we take no responsibility for the precise accuracy with which any property is represented.

Arodene Road, Brixton, SW2

