



## Trinity Rise, Herne Hill, SW2

£360,000

1 bedroom flat - conversion for sale

### Property Details

A charming split level one bedroom flat, within an Edwardian terrace on Trinity Rise. The green open spaces of Brockwell Park are just around the corner, whilst the amenities in both Herne Hill and Tulse Hill are within easy reach. Brixton is also a short stroll away with the first stop on the Victoria Line. The property comprises an open plan reception with a contemporary kitchen, a spacious double bedroom and a modern bathroom. The apartment is split over two floors which, coupled with the large windows and multiple skylights, contributes to the light and airy atmosphere throughout.

### Features

- Edwardian conversion
- One double bedroom
- Chain free
- Bright and airy throughout
- Sought after location
- Close to Brockwell Park
- Stylish split level flat

Council tax band C

EPC rating C (75)





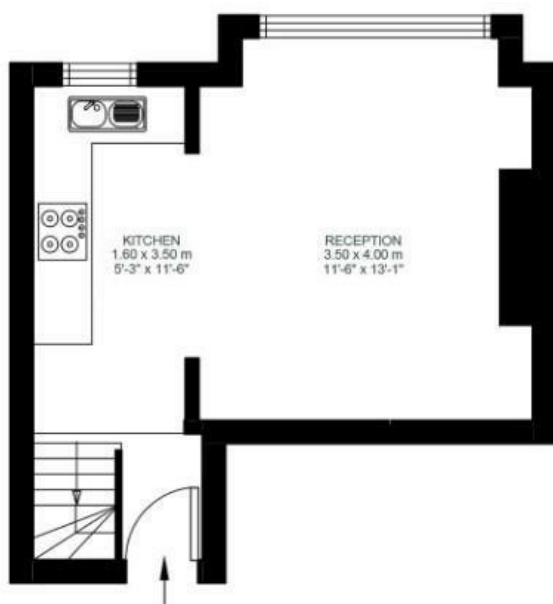
## 1 Bed house

Approx internal area:

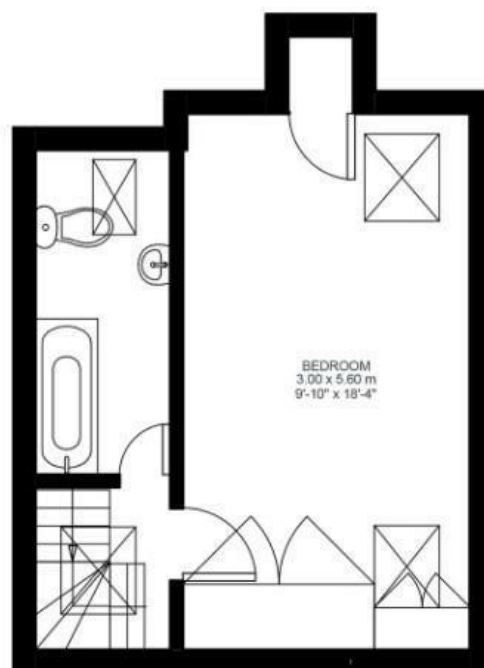
**517 sqft 48 sqm**

While we do try our very best, floor plans are produced as a guide only and we take no responsibility for the precise accuracy with which any property is represented

## Trinity Rise



First Floor



Second Floor



Trinity Rise, Herne Hill, SW2

